

SAE Net Horsepower: 512 HP (382 kW)  
Operating Weight: 158,300 lbs. (71 800 kg)  
Digging Depth: 27 ft 7 in (8.40 m)

# 750x4



SAE  
NET  
HORSEPOWER  
512  
HP  
(382  
kW)

**Link-Belt**  
EXCAVATORS



# PERFORMANCE, PRODUCTIVITY AND RELIABILITY COME STANDARD

Link-Belt X4 Series excavators are built to exceed your expectations. We redesigned the control spools and incorporated spool stroke control (SSC) functions into the hydraulic system to reduce pressure loss and distribute hydraulic oil more smoothly, increasing cycle times by 8%. Expect more power and fuel efficiency, thanks to an innovative Final Tier 4 engine that delivers improved fuel consumption, **without a Diesel Particulate Filter (DPF) to maintain or replace!** Settle in to the roomiest, most accommodating cab in its class, with more legroom and a new high-back, heated seat for shift-long comfort. Daily maintenance is a snap, with ground-level access to all service points, easily opened by hand.



# INNOVATION AND ATTENTION TO DETAILS AT EVERY LEVEL



- Three power modes (Speed Priority, Heavy and Applied Power) let you **choose the best blend of power, precision and fuel savings** for the work you're doing



- EPA Final Tier 4 engine is **fuel efficient without sacrificing power**



- **No DPF** to ever worry about!
- 2 - 3% DEF (Diesel Exhaust Fluid) consumption rate, combined with one of the largest DEF tank capacities lets you work long hours between refills



- Ground level access to routine service points lets you **cut daily maintenance down to just minutes**



- Quiet, pressurized cab offers **excellent visibility and comfortable, best-in-class seating**
- Enough floor space to **accommodate the largest of work boots**, with cup holders and roomy storage compartments for cell phones, snacks and other personal items



- Dual cab working lights are standard, or choose optional LEDs for **added visibility**

- Ergonomic joysticks **fit your hand perfectly**



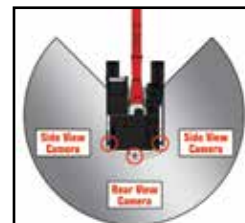
- 7" high-definition LCD monitor **keeps you connected to your machine and work environment**



- RemoteCARE® telematics **keeps a watchful eye** on performance, maintenance intervals and theft deterrence



- Full-time, rear-view camera display is standard; add the WAVES™ option for a **seamless 270° view around the machine**



- Structural improvements to the boom and arm **reduce stress and provide greater durability**



- Robust undercarriage features **larger track rollers and thicker plating for longer life**



- Unique side-frame design **reduces dirt accumulation** and is **easier to clean**

*\*All improvements and percentage increases are in reference to Link-Belt X3 Series excavators, unless otherwise stated*



Greater digging power and increased lift capacities are the result of our innovative Spool Stroke Control (SSC) system, which reduces pressure loss and distributes hydraulic oil more smoothly. Pilot pressure sensors detect the type of work being done—such as digging or leveling—and then relays that data to proportional solenoid valves that quickly determine where optimal hydraulic pressures should be directed for that operation.

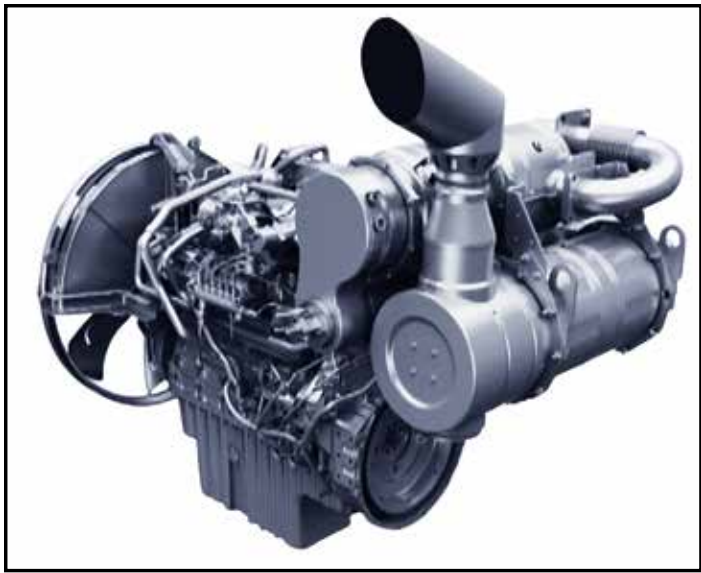
Two electronically-controlled Kawasaki variable-displacement axial-piston pumps and one Kawasaki gear pump assure that hydraulic power is delivered precisely when and where it's needed. At the same time, hydraulic flows in noncritical areas of the system are reduced.

The result is better breakout force, more lifting strength and faster machine response. You'll dig, swing and dump quicker than ever before...with 8% faster cycle times and improved fuel efficiency!

- Proprietary hydraulic system
- New control valve with larger ports; less restriction means improved hydraulic flow for increased performance
- Electronically-controlled pumps for improved cycle times, quicker response and more efficient machine operation
- Move more dirt per gallon of fuel

**QUICK AND RESPONSIVE  
TO TAKE ON TOUGH CHALLENGES**





The X4 Series features innovative EPA-certified Final Tier 4 engines from Isuzu that strike the ultimate balance between power, productivity and fuel efficiency. You'll experience improved fuel efficiency, without having to worry about costly diesel particulate filters (DPF) to maintain or replace. Three engine modes provide reliable power and control for any machine application. Choose Speed Priority (SP mode) to get jobs done quickly, Heavy (H mode) for the best blend of power and fuel savings or Applied Power (A mode), with 13 different RPM settings for precise control of heavy lifting, fine grading or leveling work.

- EPA-certified Tier 4 Final
- No DPF to maintain
- Improved fuel economy
- 500-hr. fuel filters service intervals
- 6 diesel tank refills per 1 diesel exhaust fluid (DEF) refill
- 2 - 3% DEF consumption rate
- Two-stage DEF anti-freeze system for protection in harsh operating conditions
- 30 hrs. between SCR regenerations, only takes 5-10 minutes to complete!
- VGT (Variable Geometry Turbocharger)



# POWER AND EFFICIENCY WITHOUT COMPROMISE





# MORE ROOM, COMFORT AND CONTROL FOR OPERATORS

The X4 Series offers the most advanced and roomiest cab in its class. Comfortable, automotive-grade high-back seat with head rest provides superior lumbar back support. With a longer and wider seating surface, it reclines to a 155° maximum reclining angle to create a relaxed environment during breaks. Air-suspension seat is standard with tilting adjustment and seat heaters available as options.

The cab layout also includes ergonomically-designed arm rests that move with console, maintaining a constant distance between joysticks and arm rests no matter how the seat is adjusted.

- Quiet, pressurized cab
- Joysticks with easy-to-hold grip and switches
- Handy 'radio mute' and one touch wiper switch
- Optional proportional joysticks w/ auxiliary hydraulics control
- Cup holder and storage areas for cell phones and other small items
- Dual halogen cab lights standard
- Full time rear camera display
- Optional RH & LH side cameras
- ROPS and FOPS Level 1 certified, optional FOPS Level 2 head guard available
- Optional LED lights use less energy and are 3X brighter!
- Optional retractable rear window shade
- Optional front sun visor
- Improved radio with USB port and Bluetooth for hands-free communication.





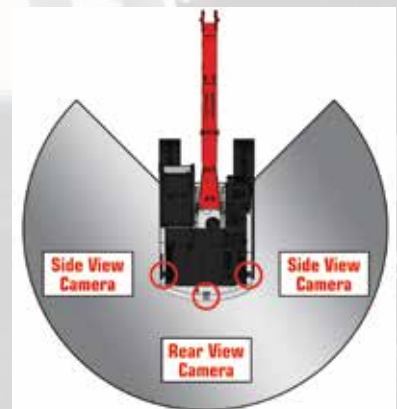


High-Definition LCD monitor has a full-color 7" display that rivals the resolution found in luxury automobiles. Controls are easy to read and easy to use. The rear-view camera activates automatically whenever the machine is started, and sight guidelines have been added for increased safety.

- Anti-glare coating on screen
- Track up to 14 service maintenance reminders
- System/machine warning messages
- Easy-to-use auto idle and auto shutdown feature
- Select and set up attachments: 5 presets for breakers; 5 presets for crushers
- In-cab flow & pressure controls for auxiliary hydraulics
- Anti-theft system
- Auto-adjusts for time and calendar
- 24 languages available
- Ability to view fuel consumption

# 270° **WAVES**™ WIDE-ANGLE VISUAL ENHANCEMENT SYSTEM

For the ultimate in visibility, X4 machines can be fitted with the Wide Angle Visual Enhancement System - or WAVES for short. Using three closed-circuit cameras, this optional viewing system provides an unbelievable 270° visual coverage around the machine, eliminating any potential blind spots from the operator's line of sight. WAVES images can be displayed on the standard X4 monitor.





# GET WORKING FAST WITH EASY ACCESS TO SERVICE POINTS

Maintenance is a snap, with ground level access to all routine service points, including batteries, fuel filters, engine oil filter, dual-element air filter and cab fresh air filter.

- Radiator screens are easy to remove and clean from ground level...no tools needed!
- A/C Condenser tilts for easy cleaning and maintenance
- Easy battery compartment access; 2 hand-turn knobs
- Improved battery disconnect switch with no keys needed
- Convenient ground-level sample ports in pump compartment
- Green drain plug and hose
- More data collection points
- Automatic door locking mechanism on side door
- Quick and easy access to grease all attachment pivot points
- Grease cylinder track adjusters make adjusting track tension a breeze
- New undercarriage side frame design enables easier cleaning
- In-cab reminders track 14 different maintenance procedures



# TELEMATICS WITH NO SUBSCRIPTION FEE

RemoteCARE® lets you remotely monitor and track machine location, operational performance, working status and periodic maintenance requirements - now at no cost to you. It tracks and records both routine and major service intervals for your machines, giving you more flexibility and control when scheduling maintenance procedures. It also lets you be more proactive if potential failure conditions arise; whenever a diagnostic trouble code (DTC) is detected, a warning message appears on the machine display, and an e-mail alert is automatically sent to you. RemoteCARE also assists in theft prevention by offering 24/7 surveillance and geofencing capabilities.

## FREE Subscription Includes:

- ✓ 24/7 Remote Monitoring and Security
- ✓ Machine Location
- ✓ Geo-fence & Curfew Range
- ✓ Actual Fuel Consumption
- ✓ Fuel Levels
- ✓ Hour Meter Reading
- ✓ Radiator Water Temperature
- ✓ Machine Working Time/Idle Time
- ✓ Attachment Working Hours
- ✓ Working Modes
- ✓ Service Maintenance Reminders
- ✓ Service Warnings



## REMOTE CARE® APP

Manage your Link-Belt equipment with this user friendly telematics management tool with GPS technology. The RemoteCARE App provides timely and reliable machine utilization – as well as assisting in DTC notifications. With RemoteCARE you will be able to remotely monitor and track your machine's location, operational performance, and working status. Contact your local Link-Belt dealer for questions.

### App features include...

- Machine location
- Fuel consumption
- Utilization report
- Fuel efficiency
- Analytical snapshots
- Idle rate
- DTC notification history
- Favorite list

Download Apple or Android app at [lbxco.com/apps](http://lbxco.com/apps) for phone and tablet.



# BUILT STRONG TO HANDLE ANYTHING

X4 machines are more rugged and durable, with robust structural improvements to the boom & arm structures, along with improvements to lower frame and travel components.



## Boom & Arm

- Improved boss shapes reduce stress on boom and arm pin
- Boom side plate thicker by 16%
- 4% thicker pin diameter on boom and arm



## Lowers

- Increased track gauge width for better lifting capacity
- Lower width of undercarriage in retracted position (for transportation) is the same as previous model
- Unique side-frame design reduces dirt accumulation and is easier to clean.



# CUSTOMER SUPPORT IS JUST A CALL AWAY

A network of Link-Belt Excavator dealers across the U.S. and Canada is waiting to serve you. Expect fast and dependable service, backed by 24/7 access to parts.

## Exceptional Warranty Coverage

All X4 excavators purchased after July 1, 2020 are backed by a 5-year/5,000-hour Full Machine Warranty, 5-year/10,000-hour Structural Warranty, along with participation in the X4 Fluid Analysis Program for the duration of the warranty (free with all X4 machines). Extended warranty coverage packages are also available.

Contact your dealer for complete details.



# SPECIFICATIONS



## Engine

Isuzu AQ-6WG1X Final Tier 4 turbocharged diesel engine with electronic control (ECM) and high pressure common-rail fuel injection, 6-cylinder, water-cooled, cooled Exhaust Gas Recirculation (EGR), Intercooler, Variable-Geometry Turbocharger (VGT), Diesel Oxidation Catalyst (DOC) and Selective Catalytic Reduction (SCR) system with Dosing Control Module and heated DEF lines and tank. Electronic fuel pump and priming, Fuel cooler, Auto-idle start, Auto warm-up, EPF engine protection, dual-stage fuel filtration, remote oil filter, engine oil sample port, green plug oil drain, double element air filter.

Net horsepower.....	512 hp (382 kW) @ 1,800 rpm
Net horsepower (with fan-pump).....	460 hp (343 kW) @ 1,800 rpm
Displacement.....	957 cu in (15.7 L)
Maximum Torque.....	1,623 lbf-ft (2 200 Nm) @ 1,450 rpm
Starter.....	24V-7.0kW
Alternator.....	50 amp
Battery.....	(2) 12-volt 140 amp hours



## Cab and Controls

OPG Level 1 certified with automatic climate control A/C and heat with defroster, 7" LCD Hi-Definition color monitor with full time rear view camera display, fuel efficiency gauge, low-effort joysticks are pre-wired for auxiliary hydraulics, dual cab lights, control pattern changer, safety glass windows, sunroof with sunshade, shockless cab suspension with four fluid-filled cab mounts, SCM High-Back reclining air-suspension seat, sliding 4-position tilting control consoles, AM/FM sound system with MP3 auxiliary input jack, digital clock, dome light, seat belt, coat hook, cup holder, storage compartments, floor mat, footrests, ashtray, 24V cigarette lighter, 12V outlet, travel alarm, handrails, mirrors, side-entry cab filter.

Three selectable work modes, RemoteCARE Telematics GPS system, anti-theft password protection system, onboard self-diagnostic system with memory and service interval reminders, auto idling system, one-touch decelerator, auto-idle engine shutdown, auto-power boost, neutral safety start, gate-lock safety shutoff.



## Hydraulic System

Open-center system, two variable-displacement electronically controlled axial-piston pumps and one gear pump for pilot controls, main control valve with one 4-spool section and one 5-spool section with auxiliary spool: stackable, Auxiliary Control System, oil cooler, Auto-Power boost, anti-drift valves, 6 micron return filter, firewall, hydraulic oil sample port.

### Hydraulic Pumps

Pump Output.....	2 x 125 gpm (472 L/min)
Pilot Pump Maximum Flow.....	7.1 gpm (27 L/min)

### Relief Valve Settings

Boom Up / Arm / Bucket.....	4,550 psi (31.4 MPa)
in Power Boost.....	4,970 psi (34.3 MPa)
Boom Down.....	3,990 psi (27.5 MPa)
Swing Circuit.....	4,050 psi (27.9 MPa)
Travel Circuit.....	4,970 psi (34.3 MPa)

### Hydraulic Cylinders

	number of cylinders - bore x stroke
Boom.....	2 - 7.5" x 71.1" (190 mm x 1 805 mm)
Arm.....	1 - 8.3" x 81" (210 mm x 2 055 mm)
Bucket.....	7.3" x 57.7" (185 mm x 1 465 mm)



## Swing

Planetary reduction powered by axial-piston motor, Internal ring gear with grease cavity for swing pinion, Mechanical disc swing brake, Free swing.

Swing Speed.....	6.7 rpm
Tail Swing.....	13' 3" (4.05 m)
Swing Torque.....	178,000 lbf-ft (241 kNm)

## Undercarriage

19' 3"(5.88 m) long undercarriage by 11' 00"(3.35 m) track gauge, Sealed and strutted track chain with track guide, Sealed rollers and idlers, Two-speed independent hydrostatic travel with planetary final drive, Disc type brakes, Adjustable track tension, Carbody belly pan.

Carrier Rollers.....	3 per Side
Track Rollers.....	8 per Side
Track Link Pitch.....	10.24" (260 mm)
Shoes.....	47 per Side
Shoe Width.....	35.4" (900 mm)
Ground Pressure.....	11.02 psi (0.076 MPa)



## Travel System

Two-speed independent hydrostatic travel with axial-piston motors, Hydraulic motor powered output shaft coupled to a planetary reduction drive and track sprocket, All hydraulic components mounted within the width of side frame, Automatic downshift for high torque to overcome obstacles, Spring-applied hydraulic release parking brake built into each motor, Travel motors equipped with counterbalance valve to prevent over-speeding down an incline, Single-pedal straight line travel.

Travel Speeds.....	1.9 - 2.7 mph (3.0 - 4.3 km/h)
Drawbar Pull.....	101,000 lbf (449 kN)
Gradeability.....	70% (35°)



## Attachment

Boom..... 25' 3" (7.70 m)

### Available Arms

Available Arms	Digging Force
• 11' 8" (3.55 m).....	58,230 lbf (259 kN)
with Auto Power Boost.....	63,620 lbf (283 kN)
• 9' 10" (3.02 m).....	64,970 lbf (289 kN)
with Auto Power Boost.....	71,040 lbf (316 kN)
• 13' 6" (4.11 m).....	52,380 lbf (233 kN)
with Auto Power Boost.....	57,100 lbf (254 kN)
• 16' 5" (5.0 m).....	45,410 lbf (202 kN)
with Auto Power Boost.....	49,460 lbf (220 kN)
• Bucket Digging Force.....	68,790 lbf (306 kN)
with Auto Power Boost.....	75,090 lbf (334 kN)



## Lubricant & Coolant Capacity

Fuel Tank.....	238 Gallons (900 Liters)
Hydraulic System.....	172 Gallons (650 Liters)
Hydraulic Tank.....	81.9 Gallons (310 Liters)
Final Drive (per side).....	4 Gallons (15 Liters)
Swing Drive.....	7.1 Gallons (27 Liters)
Engine Oil.....	13.7 Gallons (52 Liters)
DEF Tank.....	40 Gallons (152 Liters)
Coolant System.....	28.5 Gallons (108 Liters)



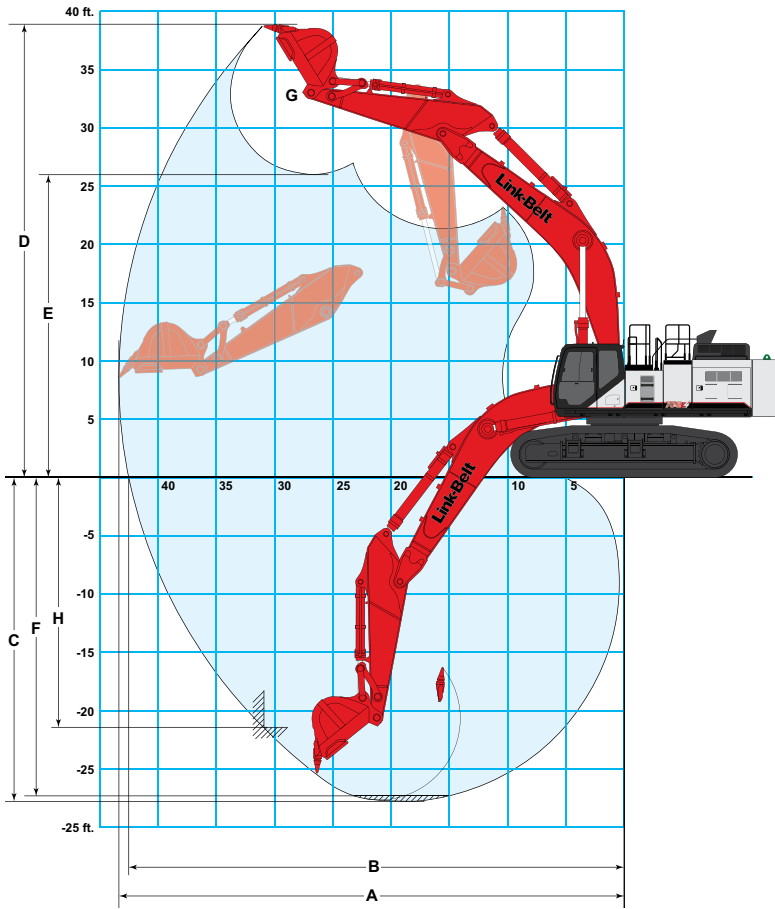
## Operating Weight

Working weight with 35.4" (900 mm) shoes, 25' 3" (7.70 m) boom, 11' 8" (3.55 m) arm, 6,437 lb. (2 920 kg) bucket, 22,900 lb. (10 400 kg) counterweight  
..... 158 300 lbs. (71,800 kg)

### Mass Excavator

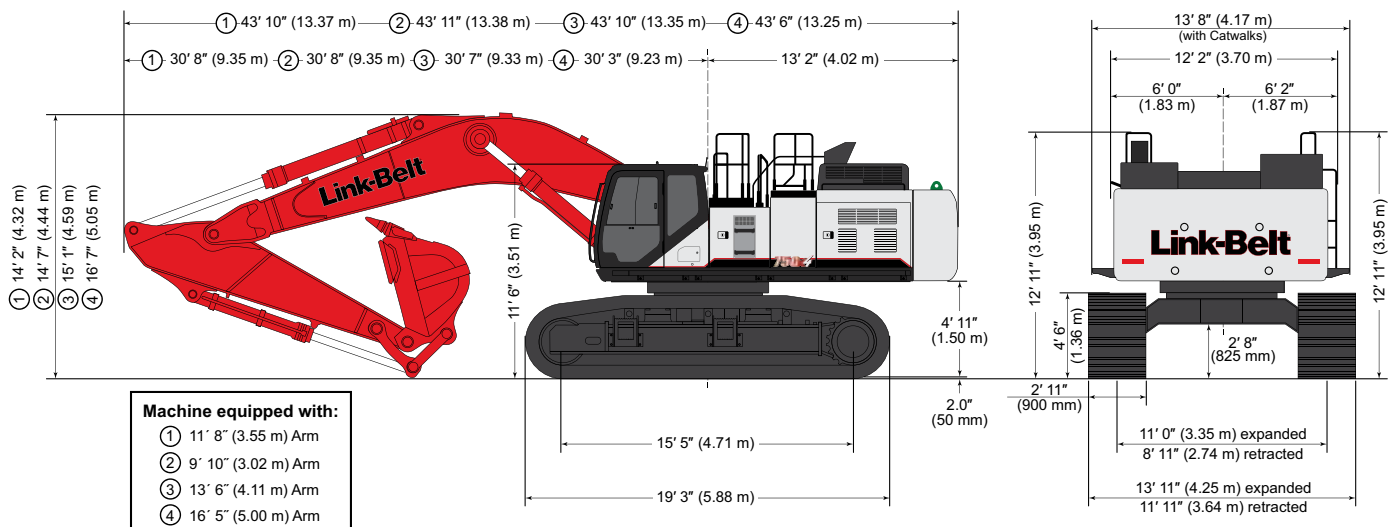
Working weight with 35.4" (900 mm) shoes, 21' 7" (6.58 m) boom, 9' 10" (3.02 m) arm, 7,470 lb. (3 390 kg) bucket, 22,900 lb. (10 400 kg) counterweight  
..... 159 600 lbs. (72,400 kg)

# WORKING RANGE & TRAVEL DIMENSIONS



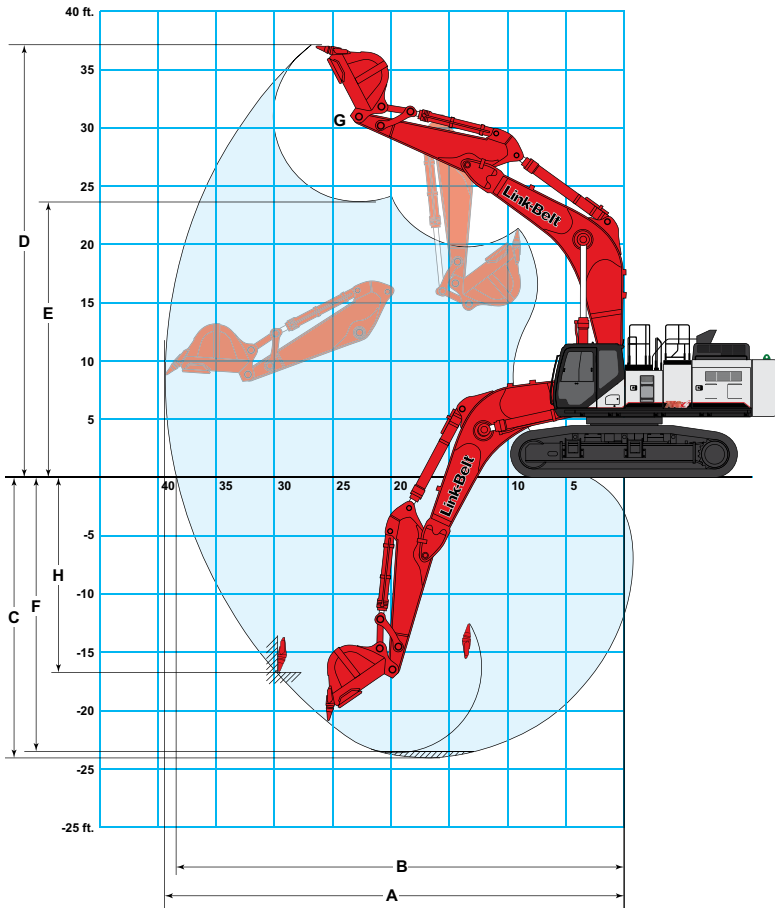
Machine Equipped with 25' 3" (7.70 m) Boom	Arm 11' 8" (3.55 m)	Arm 9' 10" (3.02 m)	Arm 13' 6" (4.11 m)	Arm 16' 5" (5.00 m)
A. Maximum reach	42' 11" (13.07 m)	41' 11" (12.78 m)	44' 9" (13.63 m)	47' 5" (14.45 m)
B. Maximum reach @ ground level	42' 0" (12.81 m)	41' 1" (12.52 m)	43' 11" (13.39 m)	46' 8" (14.22 m)
C. Maximum dig depth	27' 7" (8.40 m)	25' 10" (7.87 m)	29' 5" (8.97 m)	32' 4" (9.85 m)
D. Maximum dig height	38' 2" (11.63 m)	39' 8" (12.1 m)	39' 3" (11.97 m)	40' 3" (12.28 m)
E. Maximum dump height	25' 7" (7.81 m)	26' 6" (8.09 m)	26' 7" (8.11 m)	27' 7" (8.40 m)
F. Digging depth 8' (2.44 m) level bottom	27' 1" (8.26 m)	25' 4" (7.72 m)	29' 0" (8.85 m)	32' 0" (9.75 m)
G. Bucket rotation	175°	175°	175°	175°
H. Maximum vertical wall depth	21' 3" (6.48 m)	22' 6" (6.85 m)	23' 11" (7.28 m)	27' 0" (8.23 m)

## Travel Dimensions



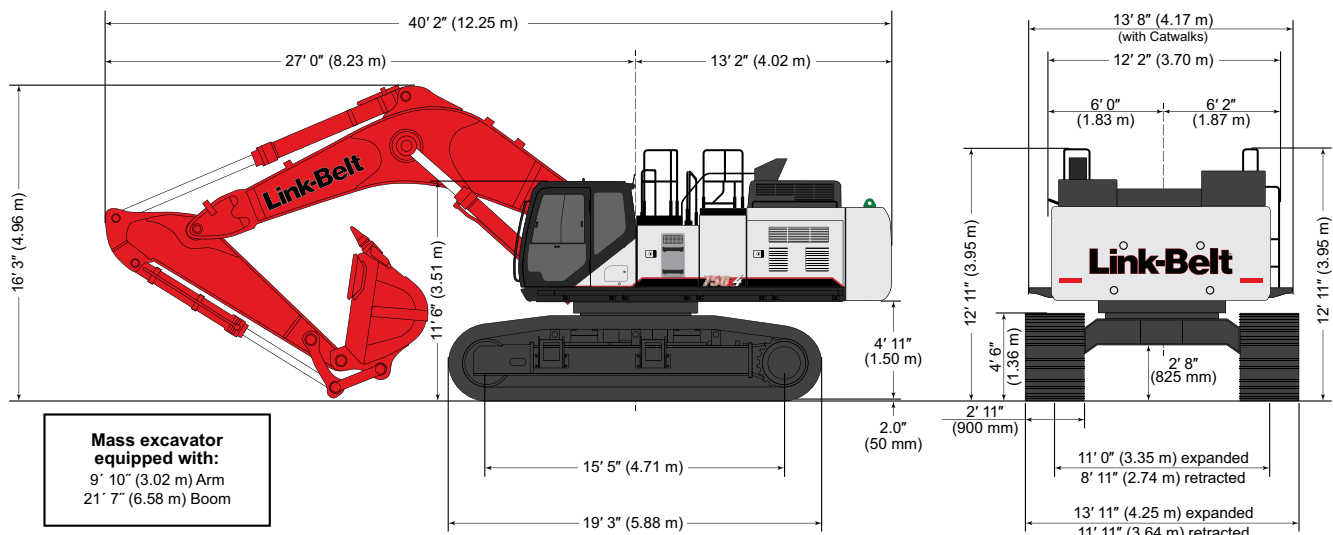
# WORKING RANGE & TRAVEL DIMENSIONS

## Mass Excavator Working Range

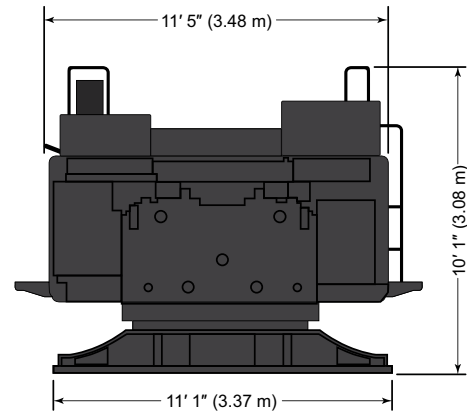
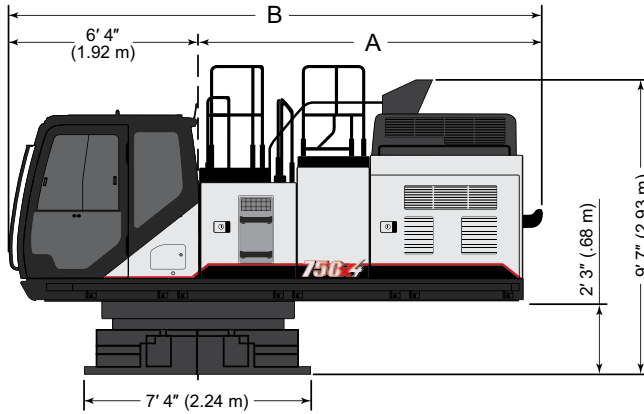


Mass Excavator with 21' 7" (6.58 m) Boom	Arm 9' 10" (3.02 m)
A. Maximum reach	38' 6" (11.73 m)
B. Maximum reach @ ground level	37' 6" (11.44 m)
C. Maximum dig depth	23' 7" (7.18 m)
D. Maximum dig height	36' 3" (11.06 m)
E. Maximum dump height	22' 11" (6.99 m)
F. Digging depth 8' (2.44 m) level bottom	23' 1" (7.03 m)
G. Bucket rotation	170°
H. Maximum vertical wall depth	16' 5" (5.00 m)

## Mass Excavator Travel Dimensions

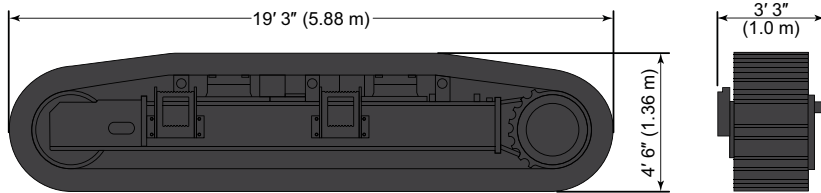
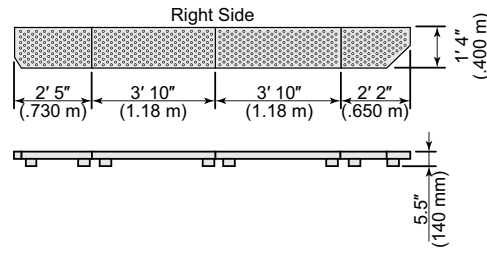
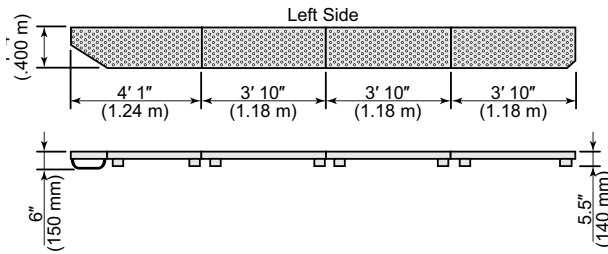
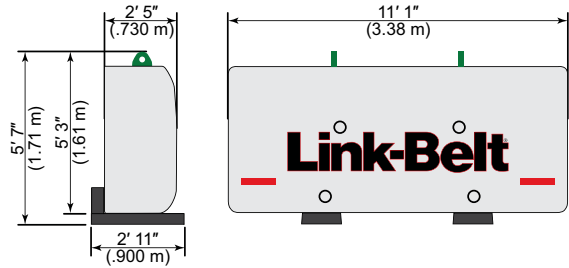


# TRANSPORTATION SPECIFICATIONS

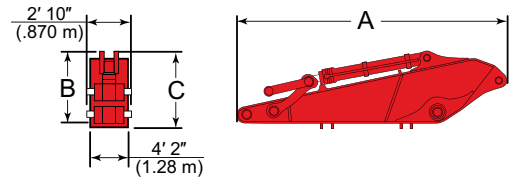
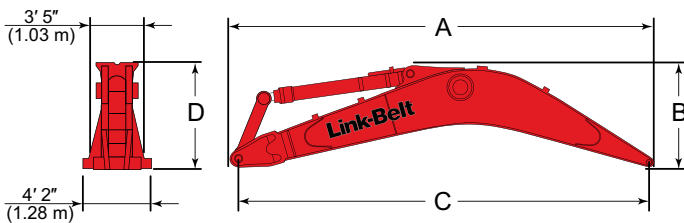


SPEC	A	B	Weight
STD	11' 4" 3.45	17' 11" 5.47	50,816 lbs. 23 050 kg
OPT*	12' 8" 3.87	19' 0" 5.79	53,021 lbs. 24 050 kg

\*Counterweight



SPEC	Shoe Width	Track Guard	Weight
OPT	25.5" 650 mm	DOUBLE	22,245 lbs. (10 090 kg.)
		FULL	22,972 lbs. (10 420 kg.)
STD	29.5" 750 mm	DOUBLE	22,906 lbs. (10 390 kg.)
		FULL	23,634 lbs. (10 720 kg.)
STD	35.4" 900 mm	DOUBLE	23,810 lbs. (10 800 kg.)
OPT		FULL	24,537 lbs. (11 130 kg.)



SPEC	BOOM	A	B	C	D	Weight
STD	STD	26' 5" 8.04 m	6' 8" 2.02 m	25' 3" 7.70 m	6' 7" 2.00 m	14,617 lbs. 6 630 kg
OPT	SHORT	22' 8" 6.92 m	8' 3" 2.51 m	21' 7" 6.58 m	8' 2" 2.50 m	14,705 lbs. 6 670 kg

SPEC	ARM	A	B	C	Weight
STD	STD	16' 4" 4.98 m	4' 5" 1.34 m	4' 9" 1.44 m	8,356 lbs. 3 790 kg
OPT	SHORT	14' 3" 4.34 m	4' 7" 1.40 m	4' 11" 1.50 m	8,359 lbs. 3 790 kg
	LONG	18' 1" 5.52 m	4' 0" 1.23 m	4' 4" 1.33 m	8,576 lbs. 3 890 kg
	S-LONG	21' 0" 6.40 m	3' 10" 1.18 m	4' 2" 1.28 m	9,480 lbs. 4 300 kg



# LIFT CAPACITIES

Radius of Load																					
11' 8" (3.55 m) Arm with 25' 3" (7.70 m) Boom and 6,440 lb. (2 920 kg) Bucket with Power-Boost Applied - Standard Arm																					
End	Side	5' 0" (1.5 m)		10' 0" (3.0 m)		15' 0" (4.5 m)		20' 0" (6.0 m)		25' 0" (7.5 m)		30' 0" (9.0 m)		35' 0" (10.5 m)		40' 0" (12.0 m)		Max Reach			
		End	Side	End	Side	End	Side	End	Side	End	Side	End	Side	End	Side	End	Side	End	Side		
+30' 0"	lbs																			17,650*	17,650*
(9.0 m)	kg																			7,990*	7,990*
+25' 0"	lbs																			17,450*	16,800
(7.5 m)	kg																			7,910*	7,540
+20' 0"	lbs																			17,650*	14,850
(6.0 m)	kg																			8,020*	6,680
+15' 0"	lbs																			18,050*	14,950
(4.5 m)	kg																			7,040	6,850
+10' 0"	lbs																			14,950*	14,850
(3.0 m)	kg																			6,440	6,440
+5' 0"	lbs																			18,050*	14,950
(1.5 m)	kg																			6,440	6,440
Ground	lbs																			21,200	13,550
Line	kg																			9,610	6,140
-5' 0"	lbs	24,500*	24,500*	36,500*	36,500*	54,350*	54,350*	54,750*	42,850	42,050*	29,750	33,450*	22,050	26,300	17,050					22,800	14,650
(1.5 m)	kg	10,710*	10,710*	16,470*	16,470*	23,820*	23,820*	25,310*	19,950	19,450*	13,840	15,500*	10,270	12,240	7,940					10,320	6,640
-10' 0"	lbs	42,200*	42,200*	46,950*	46,950*	69,150*	68,500	52,300*	43,200	40,550*	29,900	32,050*	22,250	24,750*	17,400					23,100*	16,650
(3.0 m)	kg	18,750*	18,750*	20,910*	20,910*	30,930*	30,930*	24,180*	20,100	18,780*	13,900	14,890*	10,350	11,660*	8,100					10,460*	7,510
-15' 0"	lbs	48,000*	48,000*	63,700*	63,700*	61,450*	61,450*	47,050*	43,650	36,550*	30,600	27,850*	23,000							22,800*	20,150
(4.5 m)	kg	21,540*	21,540*	28,220*	28,220*	28,470*	28,470*	21,840*	20,300*	17,030*	14,210	13,130*	10,700*							10,370*	9,050
-20' 0"	lbs			63,600*	63,600*	48,700*	48,700*	37,700*	37,700*	28,100*	28,100*									21,550*	21,550*
(6.0 m)	kg			29,800*	29,800*	22,810*	22,810*	17,730*	17,730*	13,430*	13,430*									9,780*	9,780*

Radius of Load																					
13' 6" (4.11 m) Arm with 25' 3" (7.70 m) Boom and 6,440 lb. (2 920 kg) Bucket with Power-Boost Applied - Long Arm																					
End	Side	5' 0" (1.5 m)		10' 0" (3.0 m)		15' 0" (4.5 m)		20' 0" (6.0 m)		25' 0" (7.5 m)		30' 0" (9.0 m)		35' 0" (10.5 m)		40' 0" (12.0 m)		Max Reach			
		End	Side	End	Side	End	Side	End	Side	End	Side	End	Side	End	Side	End	Side	End	Side		
+35' 0"	lbs																			15,300*	15,300*
(10.5 m)	kg																			6,890*	6,890*
+30' 0"	lbs																			14,600*	14,600*
(9.0 m)	kg																			6,590*	6,590*
+25' 0"	lbs																			14,350*	14,350*
(7.5 m)	kg																			6,510*	6,510*
+20' 0"	lbs																			14,450*	13,500
(6.0 m)	kg																			6,570*	6,080
+15' 0"	lbs																			14,950*	12,500
(4.5 m)	kg																			6,780*	5,640
+10' 0"	lbs																			15,650*	12,000
(3.0 m)	kg																			7,110*	5,430
+5' 0"	lbs																			11,900	11,900
(1.5 m)	kg																			5,410	5,410
Ground	lbs																			18,350*	12,300
Line	kg																			8,320*	5,580
-5' 0"	lbs	22,250*	22,250*	31,650*	31,650*	51,200*	51,200*	55,000*	42,700	42,100*	29,650	33,450*	22,000	26,150	16,900					21,700*	14,850
(1.5 m)	kg	9,970*	9,970*	14,250*	14,250*	22,450*	22,450*	25,420*	19,890	19,470*	13,810	15,500*	10,240	12,190	7,880					9,380*	5,990
-10' 0"	lbs	36,650*	36,650*	41,800*	41,800*	64,100*	64,100*	53,400*	42,850	41,150*	29,650	32,600*	22,000	25,950*	17,050					21,700*	14,850
(3.0 m)	kg	16,750*	16,750*	18,580*	18,580*	28,090*	28,090*	24,690*	19,950	19,050*	13,800	15,130*	10,240	12,100*	7,940					9,840*	6,710
-15' 0"	lbs	44,750*	44,750*	55,800*	55,800*	65,450*	65,450*	49,300*	43,550	38,200*	30,150	29,750*	22,550							21,700*	17,650
(4.5 m)	kg	19,990*	19,990*	24,750*	24,750*	30,320*	30,320*	22,860*	20,250	17,760*	14,010	13,910*	10,470							9,810*	7,920
-20' 0"	lbs			74,200*	74,200*	54,500*	54,500*	41,650*	41,650*	31,800*	30,350*	22,050*	22,050*							21,050*	21,050*
(6.0 m)	kg			33,630*	33,630*	25,450*	25,450*	19,500*	19,500*	15,000*	14,130	10,890*	10,550							9,540*	9,540*
-25' 0"	lbs																			18,050*	18,050*
(7.5 m)	kg																			8,370*	8,370*

## Notes: Excavator lifting capacities

- Lifting capacities shown should not be exceeded. Weight of all lifting accessories must be deducted from the above lifting capacities.
- Lifting capacities are based on machine standing on firm, uniform supporting surface. User must make allowances for job conditions such as soft or uneven ground.
- Lifting capacities shown do not exceed 75% of minimum tipping loads or 87% of hydraulic capacities. **Capacities marked with an asterisk (\*) are limited by hydraulic capacities.**
- Least stable position is over the side.
- Operator should be fully acquainted with the Operator's Manual & Operating Safety Booklet, furnished by LBX before operating the machine.
- Capacities apply only to the machine as originally manufactured and normally equipped by LBX Company, LLC.
- Lift capacity ratings are based on ISO 10567, "Earthmoving Machinery - Hydraulic Excavators - Lift Capacity."

# LIFT CAPACITIES

Radius of Load																							
16' 5" (5.0 m) Arm with 25' 3" (7.70 m) Boom and 6,440 lb. (2 920 kg) Bucket with Power-Boost Applied - S-Long Arm																							
End	Side	5' 0" (1.5 m)		10' 0" (3.0 m)		15' 0" (4.5 m)		20' 0" (6.0 m)		25' 0" (7.5 m)		30' 0" (9.0 m)		35' 0" (10.5 m)		40' 0" (12.0 m)		45' 0" (13.5 m)		Max Reach			
		End	Side	End	Side	End	Side	End	Side	End	Side	End	Side	End	Side	End	Side	End	Side	End	Side		
+35' 0"	lbs																				11,450*	11,450*	
(10.5 m)	kg																				5 160*	5 160*	
+30' 0"	lbs														15,300*	15,300*	12,600*	12,600*				10,950*	10,950*
(9.0 m)	kg													7 220*	7 220*	6 220*	6 220*				4 940*	4 940*	
+25' 0"	lbs													18,000*	18,000*	15,250*	15,250*				10,750*	10,750*	
(7.5 m)	kg												8 520*	8 520*	7 140*	7 140*				4 870*	4 870*		
+20' 0"	lbs												20,250*	19,950*	17,150*	15,550*				10,850*	10,850*		
(6.0 m)	kg											9 280*	9 260*	7 970*	7 290*				4 920*	4 920*			
+15' 0"	lbs									23,650*	23,650*	23,850*	23,850*	21,550*	19,900*	19,400*	14,950*	13,100*	11,200*	11,200*	11,200*	10,700*	
(4.5 m)	kg									11 110*	11 110*	11 000*	11 000*	9 960*	9 310*	8 930*	7 020*	6 700*	5 290*	5 080*	5 080*	4 840*	
+10' 0"	lbs					47,750*	47,750*	43,000*	43,000*	33,650*	33,650*	27,800*	25,350*	23,750*	18,950*	20,700*	14,350*	14,600*	10,850*	11,750*	11,750*	10,250*	
(3.0 m)	kg					25 120*	25 120*	19 970*	19 970*	15 590*	15 590*	12 870*	11 820*	10 990*	8 840*	9 560*	6 720*	7 410*	5 120*	5 340*	5 340*	4 650*	
+5' 0"	lbs					65,500*	65,500*	49,600*	47,000*	37,650*	32,700*	30,400*	23,900*	25,500*	17,950*	21,400*	13,700*	14,800*	10,500*	12,600*	12,600*	10,150*	
(1.5 m)	kg					30 260*	30 260*	23 000*	21 850*	17 440*	15 230*	14 070*	11 130*	11 790*	8 390*	9 960*	6 430*	7 670*	4 950*	5 720*	5 720*	4 610*	
Ground	lbs			19,900*	19,900*	49,150*	49,150*	53,550*	44,300*	40,450*	30,800*	32,250*	22,650*	26,350*	17,150*	20,850*	13,200*				13,850*	10,450*	
Line	kg			8 760*	8 760*	21 280*	21 280*	24 780*	20 610*	18 710*	14 340*	14 920*	10 560*	12 270*	8 010*	9 740*	6 190*				6 270*	4 730*	
-5' 0"	lbs	19,400*	19,400*	28,350*	28,350*	50,250*	50,250*	54,600*	42,450*	41,550*	29,500*	32,950*	21,750*	25,850*	16,550*	20,500*	12,900*				15,600*	11,100*	
(1.5 m)	kg	8 690*	8 690*	12 680*	12 680*	22 000*	22 000*	25 250*	19 770*	19 230*	13 730*	15 260*	10 140*	12 050*	7 740*	9 630*	6 030*				7 060*	5 040*	
-10' 0"	lbs	30,050*	30,050*	36,850*	36,850*	58,650*	58,650*	53,850*	42,100*	41,100*	29,050*	32,550*	21,400*	25,650*	16,400*	20,500*	12,950*				18,200*	12,350*	
(3.0 m)	kg	13 430*	13 430*	16 390*	16 390*	25 730*	25 730*	24 890*	19 600*	19 030*	13 530*	15 100*	9 980*	11 950*	7 640*	9 560*	6 040*				8 220*	5 580*	
-15' 0"	lbs	37,700*	37,700*	47,850*	47,850*	69,500*	67,900*	51,350*	42,450*	39,450*	29,250*	31,050*	21,650*	24,300*	16,750*							19,900*	14,400*
(4.5 m)	kg	16 860*	16 860*	21 230*	21 230*	31 870*	31 400*	23 780*	19 760*	18 320*	13 620*	14 460*	10 070*	11 410*	7 800*							9 000*	6 470*
-20' 0"	lbs	48,800*	48,800*	67,400*	67,400*	61,400*	61,400*	45,950*	42,850*	35,300*	30,050*	26,950*	22,300*									19,800*	17,900*
(6.0 m)	kg	21 710*	21 710*	29 560*	29 560*	28 580*	28 580*	21 400*	19 950*	16 510*	13 960*	12 740*	10 400*									8 990*	7 980*
-25' 0"	lbs			66,450*	66,450*	48,050*	48,050*	36,200*	36,200*	26,700*	26,700*											18,800*	18,800*
(7.5 m)	kg			31 440*	31 440*	22 690*	22 690*	17 160*	17 160*	12 870*	12 870*											8 600*	8 600*

Radius of Load																		
9' 10" (3.02 m) Arm with 25' 3" (7.70 m) Boom and 6,440 lb. (2 920 kg) Bucket with Power-Boost Applied - Short Arm																		
End	Side	10' 0" (3.0 m)		15' 0" (4.5 m)		20' 0" (6.0 m)		25' 0" (7.5 m)		30' 0" (9.0 m)		35' 0" (10.5 m)		40' 0" (12.0 m)		Max Reach		
		End	Side	End	Side	End	Side	End	Side	End	Side	End	Side	End	Side	End	Side	
+35' 0"	lbs									23,750*	23,750*						22,800*	22,800*
(10.5 m)	kg									10 590*	10 590*						10 250*	10 250*
+30' 0"	lbs									24,250*	24,250*						21,450*	20,950*
(9.0 m)	kg									11 080*	11 080*						9 670*	9 320*
+25' 0"	lbs									26,450*	26,450*	23,600*	20,150*				20,800*	17,400*
(7.5 m)	kg									12 080*	12 080*	10 920*	9 450*				9 420*	7 810*
+20' 0"	lbs							31,000*	31,000*	27,500*	26,450*	24,950*	19,650*				20,700*	15,300*
(6.0 m)	kg							14 300*	14 300*	12 640*	12 270*	11 530*	9 190*				9 400*	6 910*
+15' 0"	lbs			58,950*	58,950*	42,900*	42,900*	35,550*	34,500*	29,650*	25,300*	26,100*	18,950*	21,950*	14,300*	21,100*	14,150*	
(4.5 m)	kg			17 460*	17 460*	19 900*	19 900*	16 480*	16 010*	13 700*	11 790*	11 970*	8 850*	10 280*	6 720*	9 570*	6 390*	
+10' 0"	lbs					48,650*	47,000*	39,250*	32,800*	31,800*	24,100*	26,950*	18,200*	21,600*	13,950*	21,150*	13,600*	
(3.0 m)	kg					22 510*	21 820*	18 190*	15 240*	14 710*	11 210*	12 450*	8 500*	10 100*	6 540*	9 580*	6 170*	
+5' 0"	lbs					53,250*	44,150*	41,650*	31,050*	33,300*	23,000*	26,850*	17,550*	21,300*	13,700*	21,250*	13,600*	
(1.5 m)	kg					24 610*	20 520*	19 280*	14 440*	15 410*	10 720*	12 520*	8 200*	9 940*	6 400*	9 640*	6 180*	
Ground	lbs			35,400*	35,400*	55,150*	42,700*	42,300*	29,900*	33,700*	22,250*	26,400*	17,150*				22,100*	14,200*
Line	kg			15 420*	15 420*	25 450*	19 860*	19 560*	13 920*	15 600*	10 360*	12 290*	7 990*				10 030*	6 440*
-5' 0"	lbs	31,400*	31,400*	49,050*	49,050*	53,950*	42,750*	41,700*	29,650*	33,150*	22,050*	26,300*	17,150*				22,900*	15,500*
(1.5 m)	kg	13 870*	13 870*	21 500*	21 500*	24 920*	19 920*	19 280*	13 790*	15 360*	10 260*	12 230*	7 980*				10 390*	7 010*
-10' 0"	lbs	45,800*	45,800*	65,700*	65,700*	50,550*	43,300*	39,450*	29,950*	30,950*	22,450*						22,450*	17,800*
(3.0 m)	kg	20 430*	20 430*	30 090*	30 090*	23 380*	20 170*	18 290*	13 940*	14 420*	10 420*						10 150*	8 020*
-15' 0"	lbs	65,750*	65,750*	56,600*	56,600*	44,150*	43,200*	34,250*	30,600*	24,700*	22,900*						21,300*	21,300*
(4.5 m)	kg	29 010*	29 010*	26 240*	26 240*	20 520*	20 110*	16 020*	14 230*	11 870*	10 670*						9 640*	9 640*
-20' 0"	lbs			42,000*	42,000*	32,750*	32,750*	22,600*	22,600*								18,200*	18,200*
(6.0 m)	kg			19 770*	19 770*	15 560*	15 560*	11 190*	11 190*								8 350*	8 350*

# LIFT CAPACITIES

Radius of Load																	
9' 10" (3.02 m) Arm with 21' 7" (6.58 m) Boom and 7,470 lb. (3 390 kg) Bucket with Power-Boost Applied - Mass Arm																	
End	Side	5' 0" (1.5 m)		10' 0" (3.0 m)		15' 0" (4.5 m)		20' 0" (6.0 m)		25' 0" (7.5 m)		30' 0" (9.0 m)		35' 0" (10.5 m)		Max Reach	
		End	Side	End	Side	End	Side	End	Side	End	Side	End	Side	End	Side	End	Side
+30' 0"	lbs											19,650*	19,650*			17,300*	17,300*
(9.0 m)	kg											10 060*	10 060*			7 800*	7 800*
+25' 0"	lbs											25,450*	25,450*			16,500*	16,500*
(7.5 m)	kg											11 650*	11 650*			7 470*	7 470*
+20' 0"	lbs									31,750*	31,750*	28,050*	26,900*	21,100*	19,550	16,350*	16,350*
(6.0 m)	kg									14 590*	14 590*	13 110*	12 510	10 680*	9 200	7 410*	7 410*
+15' 0"	lbs							41,350*	41,350*	34,600*	34,600*	30,650*	25,950	26,450*	19,050	16,600*	16,600*
(4.5 m)	kg							19 190*	19 190*	16 010*	16 010*	14 090*	12 120	12 210*	8 950	7 520*	7 520*
+10' 0"	lbs					65,750*	65,750*	48,900*	48,900*	38,750*	34,200	32,200*	24,750	27,600*	18,450	17,200*	16,100
(3.0 m)	kg					30 620*	30 620*	22 570*	22 570*	17 960*	15 940	14 860*	11 570	12 760*	8 640	7 830*	7 320
+5' 0"	lbs					74,600*	74,600*	54,700*	46,900	41,850*	32,450	33,800*	23,700	27,250	17,850	18,400*	16,150
(1.5 m)	kg					34 620*	34 620*	25 250*	21 860	19 400*	15 120	15 650*	11 070	12 730	8 370	8 360*	7 340
Ground	lbs			37,300*	37,300*	78,000*	72,400	56,500*	44,850	43,050*	31,150	34,150*	22,950	26,750*	17,500	20,300*	17,000
Line	kg			16 490*	16 490*	35 640*	33 640	26 160*	20 920	19 950*	14 520	15 850*	10 710	12 540	8 190	9 230*	7 720
-5' 0"	lbs	43,300*	43,300*	51,850*	51,850*	76,600*	72,300	55,550*	44,300	42,350*	30,650	33,050*	22,750			23,400*	18,850
(1.5 m)	kg	19 340*	19 340*	23 110*	23 110*	35 420*	33 640	25 730*	20 660	19 640*	14 300	15 390*	10 600			10 590*	8 560
-10' 0"	lbs	55,100*	55,100*	72,350*	72,350*	70,000*	70,000*	51,750*	44,700	39,050*	31,000	27,850*	23,400			25,450*	22,450
(3.0 m)	kg	24 710*	24 710*	32 040*	32 040*	32 420*	32 420*	24 030*	20 830	18 220*	14 450	13 340*	10 900			11 570*	10 120
-15' 0"	lbs			79,100*	79,100*	57,600*	57,600*	42,600*	42,600*	29,250*	29,250*					23,550*	23,550*
(4.5 m)	kg			36 890*	36 890*	26 900*	26 900*	20 030*	20 030*	14 160*	14 160*					10 740*	10 740*
-20' 0"	lbs					34,600*	34,600*									24,900*	24,900*
(6.0 m)	kg					16 900*	16 900*									10 340*	10 340*

# BUCKET SIZES

Bucket Type	SAE Heaped Capacity		Width Outside Lip		Bucket Weight		Number of Teeth	Arm				Mass Excavator Arm 9' 10" 3.02 m
	(yd³)	(m³)	(in)	(mm)	(lbs)	(kg)		9' 10" 3.02 m	11' 8" 3.55 m	13' 6" 4.11 m	16' 5" 5.0 m	
HDP Heavy duty plate	2.12	1.62	37.00	940	4928	2235	4	H	H	H	H	H
	2.35	1.80	40.00	1016	5094	2311	4	H	H	H	H	H
	2.89	2.21	47.00	1194	5579	2530	5	H	H	H	H	H
	3.29	2.51	52.00	1321	5857	2657	5	H	H	H	M	H
	3.84	2.94	59.00	1499	6245	2833	5	H	H	M	L	H
	4.25	3.25	64.00	1626	6619	3002	6	M	M	M	L	H
	4.89	3.74	72.00	1829	7062	3203	6	M	M	L	NA	H
	5.37	4.11	78.00	1981	7315	3318	6	L	L	L	NA	M
XDP Extreme duty plate	1.78	1.36	35.00	889	5293	2400	3	H	H	H	H	H
	2.47	1.89	45.00	1143	6059	2748	4	H	H	H	H	H
	3.26	2.57	56.00	1422	6765	3068	4	H	H	H	M	H
	3.99	3.05	66.00	1676	7531	3415	5	M	M	M	L	H
	4.43	3.39	72.00	1829	7916	3590	5	M	M	L	L	H
	4.87	3.72	78.00	1981	8693	3943	6	L	L	L	NA	H

**Approval Code For Arm/Bucket Combinations**  
 H ..... Heavy material (up to 3,370 lbs./yd³)  
 M ..... Medium material (up to 2,700 lbs./yd³)  
 L ..... Light material (up to 2,020 lbs./yd³)  
 N/A ..... Not applicable

## Notes: Excavator lifting capacities

- Lifting capacities shown should not be exceeded. Weight of all lifting accessories must be deducted from the above lifting capacities.
- Lifting capacities are based on machine standing on firm, uniform supporting surface. User must make allowances for job conditions such as soft or uneven ground.
- Lifting capacities shown do not exceed 75% of minimum tipping loads or 87% of hydraulic capacities. **Capacities marked with an asterisk (\*) are limited by hydraulic capacities.**
- Least stable position is over the side.
- Operator should be fully acquainted with the Operator's Manual & Operating Safety Booklet, furnished by LBX before operating the machine.
- Capacities apply only to the machine as originally manufactured and normally equipped by LBX Company, LLC.
- Lift capacity ratings are based on ISO 10567, "Earthmoving Machinery - Hydraulic Excavators - Lift Capacity."

# STANDARD & OPTIONAL EQUIPMENT

## STANDARD EQUIPMENT

### CAB

---

- 12V Power Outlet
- AM/FM Sound System
- Anti-Theft Device
- Auxiliary Switches on Control Lever
- Bluetooth
- Cab Filter - External
- Cab Handrails
- Cab Interior Light
- Cab ISO-Mounts
- Cab Light (2)
- Clear Roof Window
- Climate Control A/C and Heater
- Cup Holder
- Defroster
- Digital Clock
- Emergency Exit and Hammer
- Face Vent
- Floor Mat
- FOPS Level 1 Certified
- Front Window One-Touch Lock
- Gate Lock Hydraulic Activation
- Horn
- Hour Meter (Digital)
- LCD Color Monitor
- Magazine Storage Rack
- Maintenance Interval Reminders
- MP3 Auxiliary Input Jack
- On-Board Diagnostic System
- One-Piece Right Window
- Radio Mute Switch
- Rear View Camera
- Rear View Mirrors (2)
- RemoteCARE Support System (GPS)
- Roof Sun Shade
- ROPS Certified Structure
- Safety Glass Windows
- SCM Suspension Seat
- Seat Recline
- Selectable Monitor Languages
- Small Storage
- Travel Alarm with Cancel Switch
- Trip Meter (Digital)
- USB Input
- Wiper & Washer
- Wiper Switch on RH Joystick

### ENGINE

---

- 50A Alternator
- Air Filter (Double Element)
- Air Filter Restriction Indicator

- Air Pre-Cleaner (Cyclone type)
- Auto Warm-Up System
- Auto-Idle
- Auto-Idle Engine Shutdown
- Battery Disconnect Switch
- Cooling Fan
- Diesel Oxidation Catalyst (DOC)
- Drain for Fuel Tank
- Dual Remote Fuel Filters with Water Separators
- EGR Coolers
- Emergency Engine Stop
- Engine Idle System
- Engine Oil Sample Port
- Engine Protection Feature
- External Fuel Gauge
- External DEF Gauge
- Fan Housing
- Fuel Cooler
- Fuel Filter Restriction Indicator
- Fuel Management System
- Fuel Shut-Off Valve
- Fuel Usage History
- Fuel Usage Monitor
- Glow Plug Pre-Heat
- Idle-Start
- Intercooler
- Neutral Start
- One-Touch Idle
- Passive Emissions Regeneration
- Radiator / Oil Cooler / Intercooler Protective Screen
- Remote Engine Oil Drain
- Remote Oil Filter
- Reversible Cooling Fan
- Selective Catalytic Reduction (SCR)
- Tropical Package
- DEF Gauge on Monitor
- VGT Turbocharger

### HYDRAULICS

---

- Arm Regeneration
- Arm Speed Assistance (2 Pump Flow)
- Attachment Cushion Valve
- Auto Swing Priority
- Auxiliary Flow Control
- Auxiliary Tool Settings (Memory)
- Auxiliary Valve
- Boom Regeneration
- Boom Speed Assistance (2 Pump Flow)
- Bucket Curl Assist
- Control Levers Pre-Wired for Auxiliary Hyd.

- Control Pattern Changer (2 way)
- Electronically Controlled Hydraulic Pumps
- Fire Wall
- Free Swing
- Holding Valve (Arm & Boom)
- Hydraulic Filter Restriction Indicator
- Hydraulic Oil Sample Port
- Long Life Hydraulic Oil (5,000 Hour)
- Neutral Pump De-Stroke
- Oil Cooler
- Power Boost
- Power Save
- Pressure Reading on Monitor
- Pump Stand-By Pressure
- Single Pedal Travel
- Straight Travel Circuit

### UNDERCARRIAGE

---

- 900 mm (35.5") 3-Bar Steel Grousers
- Carbody Belly Pan (Swivel Guarding)
- Center Track Guide (double)
- Lashing Points (Tie-Downs)
- Long Undercarriage
- Sealed Link Chain
- Steps
- Strutted Track Chain
- X-Pattern Carbody

### UPPERSTRUCTURE

---

- Belly Pans
- Catwalks
- Center Cover (Over Main CV)
- Fuel Tank Belly Pan
- Hand Rail (RH access)
- ISO Guard Rails
- Lifting Eyes for Counterweight
- Lockable Fuel Cap and Service Doors
- Lockable Tool Box
- Turntable Tub
- Work Lights (Boom and Tool Box)

### ATTACHMENT

---

- 11' 1" (3.38 m) Arm
- 22' 11" (6.98 m) Main Boom Section
- Auxiliary Pipe Brackets
- Boom Work Light (2)
- Bucket Anti-Clatter Device
- Chrome Pins
- Easy Maintenance System (EMS)
- HD Bucket Linkage
- Remote Lube Bank
- Teardrop Pin Retention Keepers

## OPTIONAL EQUIPMENT

### CAB

---

- 270° WAVES™ Camera System
- Cab Light (2 LED)
- Cab Sun Screen (rear)
- FOPS Head Guard (Level 2)
- Front Guard (Mesh)
- Front Guard (OPG 1,2)
- LED Light Kit for Side Camera (1)
- LED Lights for Rear Camera (2)
- Rain Deflector
- SCM Air-Suspension Seat with Tilt & Heater

### ENGINE

---

- Refuel Pump

### HYDRAULICS

---

- Hose Burst Check Valve
- Proportional Hydraulic Controls

### AUXILIARY HYDRAULIC OPTIONS

---

- Single-Acting Aux. w/ Proportional Joysticks
- Multi-Function Aux. w/ in-cab pressure setting control
- Thumb Aux. w/ Proportional Joysticks
- Combination Aux. w/ in-cab pressure setting control

### UNDERCARRIAGE

---

- 750 mm (29.5") 3-Bar Steel Grousers
- Full Length Track Guide

### UPPERSTRUCTURE

---

- Counterweight Removal System

### ATTACHMENT

---

- 8' 4" (2.53 m) Arm
- 13' 2" (4.00 m) Arm
- 15' 11" (4.85 m) Arm
- 21' 6" (6.55 m) Mass Boom Section
- Quick Couplers
- Thumbs

Litho in USA 08/20 #LBX2435 supersedes LBX2362

LBX® and Link-Bell® are registered trademarks. Copyright 2020. All rights reserved. We are constantly improving our products and therefore reserve the right to change designs and specifications.