

# 600x4

## MATERIAL HANDLER

# SPECIFICATIONS

### Engine

Isuzu AQ-6HUZX Final Tier 4 turbocharged diesel engine with electronic control (ECM) and high pressure common-rail fuel injection, 6-cylinder, water-cooled, Cooled Exhaust Gas Recirculation (EGR), Intercooler, Variable-Geometry Turbocharger (VGT), Diesel Oxidation Catalyst (DOC) and Selective Catalytic Reduction (SCR) system with Dosing Control Module and heated DEF lines and tank. Electronic fuel pump and priming, Fuel cooler, Auto-idle start, Auto warm-up, EPF engine protection, dual-stage fuel filtration, remote oil filter, engine oil sample port, green plug oil drain, double element air filter.

SAE J 1349 net horsepower.....	362 hp (270 kW) @ 2,000 rpm
with fan pump.....	329 hp (245 kW) @ 2,000 rpm
Displacement.....	600 cu in (9.8 L)
Maximum Torque.....	1 005 lbf-ft (1 363 Nm) @ 1,500 rpm
Starter.....	24V-5.5kW
Alternator.....	50 amp
Battery.....	(2) 12-volt 128 amp hours

### Cab and Controls

FOPS Level 1 certified with automatic climate control A/C and heat with defroster, 7" LCD Hi-Definition color monitor with full time rear view camera display, fuel efficiency gauge, low-effort joysticks are pre-wired for auxiliary hydraulics, dual LED cab lights, safety glass windows, sunroof with sunshade, shockless cab suspension with four fluid cab mounts, SCM High-Back reclining air-suspension seat with heat, sliding 4-position tilting control consoles, Bluetooth technology, AM/FM sound system with USB and MP3 auxiliary input jack, digital clock, dome light, seat belt, coat hook, cup holder, storage compartments, floor mat, footrests, ashtray, 24V cigarette lighter, 12V outlet, travel alarm, handrails, mirrors, side-entry cab filter, spare parts kit.

Three selectable work modes, RemoteCARE Telematics GPS system, anti-theft password protection system, onboard self-diagnostic system with memory and service interval reminders, auto idling system, one-touch decelerator, auto-idle engine shutdown, neutral safety start, gate-lock safety shutoff, front guard OPG level 1 standard equipment.

### Hydraulic System

Open-center system, (2) variable displacement axial piston pumps, (1) gear pump for pilot controls. Main control valve with one 4-spool valve and one 5-spool valve with auxiliary spool. (2) stack on valve for cab elevation and grapple rotation, Internal anti-drift valves for boom and arm, hose burst check valve (HBCV) for boom and arm, Supply and return line plumbed to arm end for grapple open/close/rotation. 8' 7" (2.73 m) stroke elevating cab riser system, Sized up swing motor, Oil cooler, O-ring face seals, High performance 6-micron full flow return filter, 8-micron pilot filter, firewall and hydraulic free swing.

#### Hydraulic Pumps

Pump Output.....	2 x 96.2 gpm (364 L/min)
Pilot Pump Maximum Flow.....	7.9 gpm (30 L/min)

#### Relief Valve Settings

Boom (up) / Arm.....	4,550 psi (31.4 MPa)
Boom (down).....	3,560 psi (24.5 MPa)
Swing Circuit.....	4,270 psi (29.4 MPa)
Travel Circuit.....	4,980 psi (34.3 MPa)

### Swing

Planetary reduction powered by axial-piston motor, Internal ring gear with grease cavity for swing pinion, Swing bearing is single-row, shear type ball bearing, Mechanical disc swing brake, Auto-power swing.

Swing Speed.....	9.1 rpm
Tail Swing.....	12' 3" (3.73 m)
Swing Torque.....	111,000 lbf-ft (150.0 kNm)



### Undercarriage

Retractable carbody with 17' 9" (5.42 m) LC long undercarriage by 12' 2" (3.72 m) track gauge, Sealed and strutted track chain with double track guide, Sealed rollers and idlers, Two-speed independent hydrostatic travel with compact planetary final drive, Disc type brakes, Adjustable track tension, Carbody belly pan.

Carrier Rollers.....	3 per Side (Retractable sideframe undercarriage)
Track Rollers.....	9 per Side
Track Link Pitch.....	9.02" (229 mm)
Shoes.....	50 per Side
Shoe Width.....	29.5" (750 mm)
Ground Pressure - no attachment.....	9.4 psi (0.065 MPa)

### Travel System

Two-speed independent hydrostatic travel with compact axial-piston motors, Hydraulic motor powered output shaft coupled to a planetary reduction drive and track sprocket, All hydraulic components mounted within the width of side frame, Automatic downshift for high torque to overcome obstacles, Spring-applied hydraulic release parking brake built into each motor, Travel motors equipped with counterbalance valve to prevent over-speeding down an incline, Single-pedal straight line travel.

Travel Speeds.....	2.0 - 3.3 mph (3.2 - 5.3 km/h)
Drawbar Pull.....	76,200 lbf (339 kN)
Gradeability.....	70% (35°)

### Attachment

Boom.....	30' 4" (9.25 m)
Arm.....	25' 6" (7.77 m)

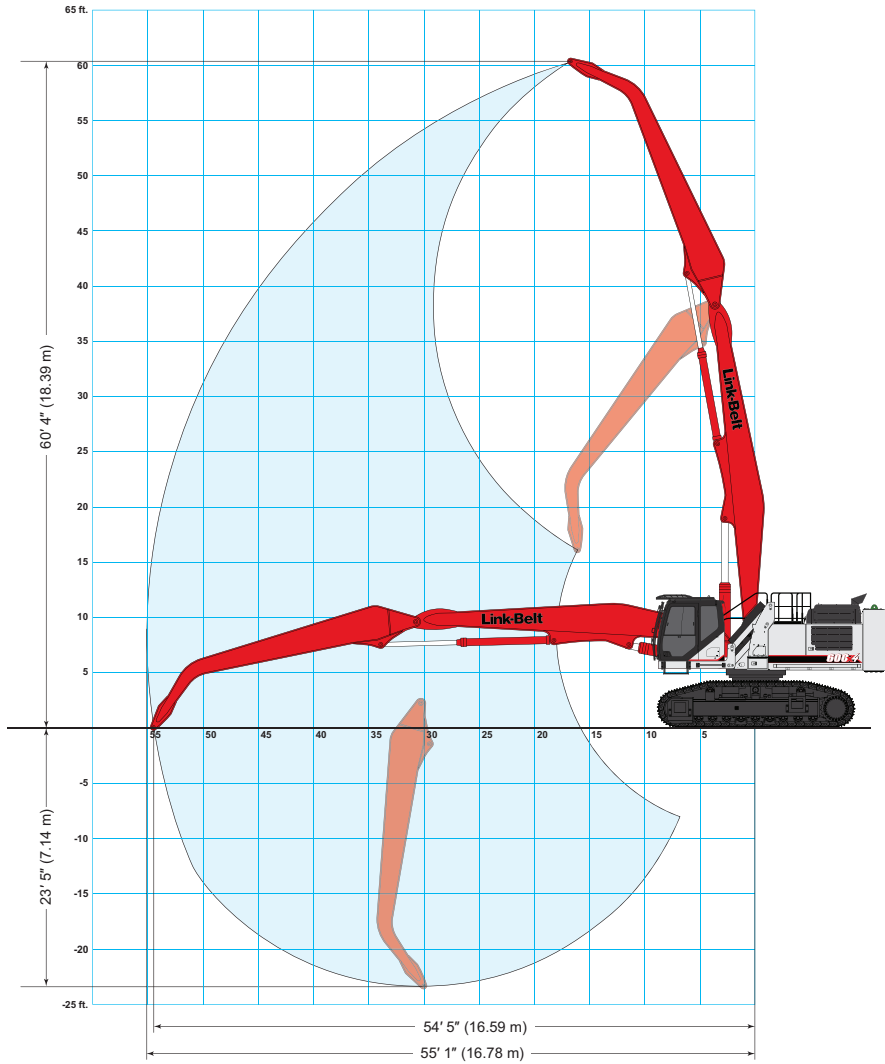
### Lubricant and Coolant Capacity

Fuel Tank.....	172 Gallons (650 Liters)
Hydraulic System.....	122 Gallons (460 Liters)
Hydraulic Tank.....	61 Gallons (230 Liters)
Final Drive (per side).....	4 Gallons (15 Liters)
Swing Drive.....	2.8 Gallons (10.5 Liters)
Engine Oil.....	10.8 Gallons (41 Liters)
DEF Tank.....	40 Gallons (152 Liters)
Coolant System.....	14.6 Gallons (55.1 Liters)

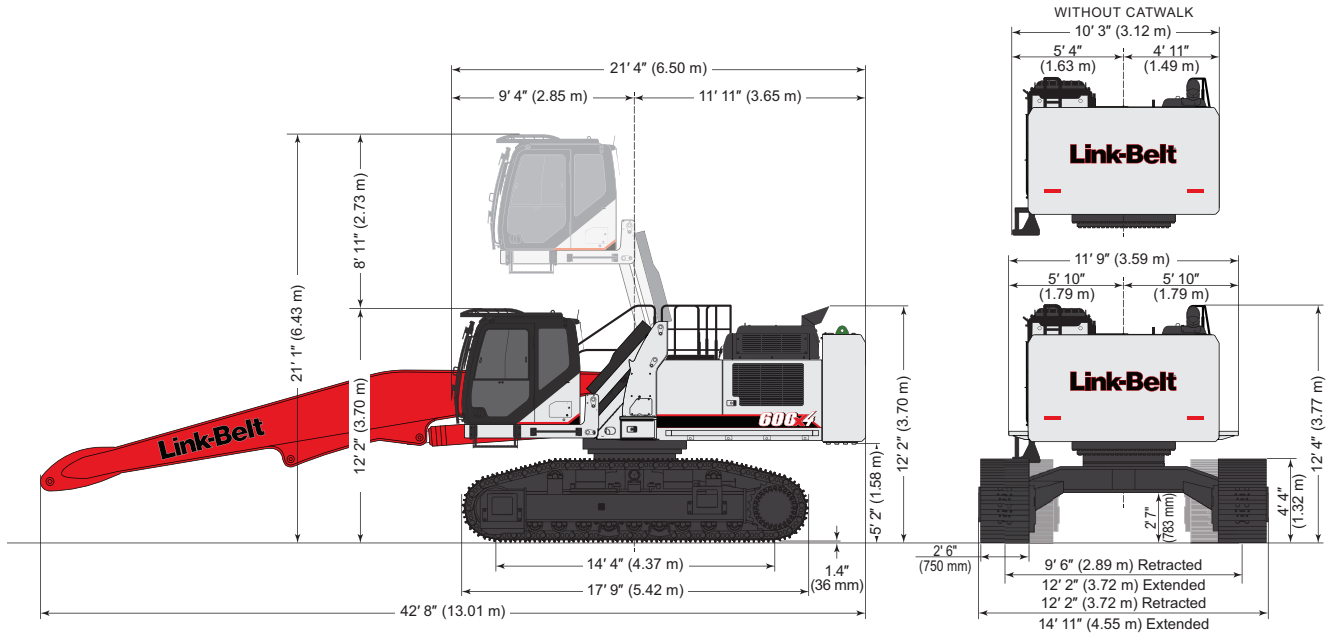
### Operating Weight - no tool

Working weight with 29.5" (750 mm) shoes, 30' 4" (9.25 m) boom, 25' 6" (7.77 m) arm and 24,900 lb. (11 300 kg) counterweight - no tool.....	126,216 lbs. (57 277 kg)
---	--------------------------

# WORKING RANGE & TRAVEL DIMENSIONS



Machine Equipped with 30' 4" (9.25 m) Boom, 25' 6" (7.77 m) Arm - No tool	
A. Maximum reach	55' 1" (16.78 m)
B. Maximum reach @ ground level	54' 5" (16.59 m)
C. Maximum depth	23' 5" (7.14 m)
D. Maximum height	60' 4" (18.39 m)



# LIFT CAPACITIES

		Radius of Load																				
		25' 6" (7.77 m) Arm with 30' 4" (9.25 m) Boom																				
End	Side	10' 0" (3.0 m)		15' 0" (4.5 m)		20' 0" (6.0 m)		25' 0" (7.5 m)		30' 0" (9.0 m)		35' 0" (10.5 m)		40' 0" (12.0 m)		45' 0" (13.5 m)		50' 0" (15.0 m)		55' 0" (16.76 m)		
		End	Side	End	Side	End	Side	End	Side	End	Side	End	Side	End	Side	End	Side	End	Side	End	Side	
+55' 0"	lbs																					
(16.5 m)	kg																					
								21,552*	21,552*													
								9 776*	9 776*													
+50' 0"	lbs									20,801*	20,801*	16,050*	16,050*									
(15.0 m)	kg									9 435*	9 435*	7 280*	7 280*									
+45' 0"	lbs									22,406*	22,406*	19,945*	19,945*	15,051*	15,051*							
(13.5 m)	kg									10 163*	10 163*	9 047*	9 047*	6 827*	6 827*							
+40' 0"	lbs									23,246*	23,246*	21,764*	21,764*	18,850*	18,850*							
(12.0 m)	kg									10 544*	10 544*	9 872*	9 872*	8 550*	8 550*							
+35' 0"	lbs									23,931*	23,931*	22,606*	22,606*	20,809*	20,183	16,973*	16,349					
(10.5 m)	kg									10 855*	10 855*	10 254*	10 254*	9 439*	9 155	7 699*	7 416					
+30' 0"	lbs									24,859*	24,859*	22,853*	22,853*	20,884*	20,042	18,223	16,343	13,007*	13,007*			
(9.0 m)	kg									11 276*	11 276*	10 366*	10 366*	9 473*	9 091	8 266	7 413	5 900*	5 900*			
+25' 0"	lbs									25,975*	25,975*	23,347*	23,347*	21,122*	19,736	18,054	16,178	15,020	13,404			
(7.5 m)	kg									11 782*	11 782*	10 590*	10 590*	9 581*	8 952	8 189	7 338	6 813	6 080			
+20' 0"	lbs									27,622*	27,622*	27,110*	27,110*	23,995*	23,898	21,442*	19,297	17,771	15,900	14,883	13,272	
(6.0 m)	kg									12 529*	12 529*	12 297*	12 297*	10 884*	10 840	9 726*	8 753	8 061	7 212	6 751	6 020	
+15' 0"	lbs					30,534*	30,534*	33,270*	33,270*	28,340*	28,340*	24,667*	23,113	20,984	18,770	17,419	15,554	14,676	13,067			
(4.5 m)	kg					13 850*	13 850*	15 091*	15 091*	12 855*	12 855*	11 189*	10 484	9 518	8 514	7 901	7 055	6 657	5 927			
+10' 0"	lbs					44,051*	44,051*	35,221*	35,221*	29,394*	28,027	24,961	22,264	20,399	18,197	17,031	15,170	14,436	12,831	11,808*	10,964	
(3.0 m)	kg					19 981*	19 981*	15 976*	15 976*	13 333*	12 713	11 322	10 099	9 253	8 254	7 725	6 881	6 548	5 820	5 356*	4 973	
+5' 0"	lbs					46,193*	46,193*	36,385*	34,831	29,961	26,771	24,108	21,433	19,824	17,633	16,645	14,793	14,196	12,595			
(1.5 m)	kg					20 953*	20 953*	16 504*	15 799	13 590*	12 143	10 935	9 722	8 992	7 998	7 550	6 710	6 439	5 713			
Ground	lbs					37,494*	37,494*	36,310*	33,184	29,068	25,684	23,351	20,695	19,308	17,128	16,301	14,453	13,988	12,390			
Line	kg					17 007*	17 007*	16 470*	15 052	13 185	11 650	10 592	9 387	8 758	7 769	7 394	6 556	6 345	5 620			
-5' 0"	lbs			12,033*	12,033*	28,023*	28,023*	34,791*	32,004	28,213	24,853	22,752	20,108	18,896	16,722	16,030	14,189	13,424*	12,249			
(1.5 m)	kg			5 458*	5 458*	12 711*	12 711*	15 781*	14 517	12 797	11 273	10 320	9 121	8 571	7 585	7 271	6 436	6 089*	5 556			
-10' 0"	lbs	8,759*	8,759*	14,659*	14,659*	27,247*	27,247*	31,824*	31,290	26,367*	24,302	22,018*	19,707	18,331*	16,446	14,888*	14,028	10,928	10,928*			
(3.0 m)	kg	3 973*	3 973*	6 649*	6 649*	12 359*	12 359*	14 435*	14 193	11 960*	11 023	9 987*	8 939	8 315*	7 460	6 753*	6 363	4 957*	4 957*			
-15' 0"	lbs			17,846*	17,846*	29,202*	29,202*	27,454*	27,454*	22,979*	22,979*	19,116*	19,116*	15,584*	15,584*	11,942*	11,942*					
(4.5 m)	kg			8 095*	8 095*	13 246*	13 246*	12 453*	12 453*	10 423*	10 423*	8 671*	8 671*	7 069*	7 069*	5 417*	5 417*					
-20' 0"	lbs					25,022*	25,022*	21,685*	21,685*	18,329*	18,329*	15,044*	15,044*	11,643*	11,643*							
(6.0 m)	kg					11 350*	11 350*	9 836*	9 836*	8 314*	8 314*	6 824*	6 824*	5 281*	5 281*							

## Notes: Excavator lifting capacities

- Lifting capacities shown should not be exceeded. Weight of all lifting accessories must be deducted from the above lifting capacities.
- Lifting capacities are based on machine standing on firm, uniform supporting surface. User must make allowances for job conditions such as soft or uneven ground.
- Lifting capacities shown do not exceed 75% of minimum tipping loads or 87% of hydraulic capacities. **Capacities marked with an asterisk (\*) are limited by hydraulic capacities.**
- Least stable position is over the side.
- Operator should be fully acquainted with the Operator's Manual & Operating Safety Booklet, furnished by LBX before operating the machine.
- Capacities apply only to the machine as originally manufactured and normally equipped by LBX Company, LLC.
- Lift capacity ratings are based on ISO 10567, "Earthmoving Machinery - Hydraulic Excavators - Lift Capacity."

# STANDARD & OPTIONAL EQUIPMENT

## STANDARD EQUIPMENT

### CAB

- 12V Power Outlet
- AM/FM Sound System
- Anti-Theft Device
- Auxiliary Switches on Control Lever
- Bluetooth
- Cab Filter - External
- Cab Handrails
- Cab Interior Light
- Cab ISO-Mounts
- Cab Light (2 LED)
- Clear Roof Window
- Climate Control A/C and Heater
- Cup Holder
- Defroster
- Digital Clock
- Emergency Exit and Hammer
- Face Vent
- Floor Mat
- FOPS Level 1 Certified
- Front Guard (OPG 1) - Bar style
- Front Window One-Touch Lock
- Gate Lock Hydraulic Activation
- Horn
- Hour Meter (Digital)
- Hydraulic Cab Riser
- LCD Color Monitor
- Magazine Storage Rack
- Maintenance Interval Reminders
- MP3 Auxiliary Input Jack
- On-Board Diagnostic System
- One-Piece Right Window
- Radio Mute Switch
- Rear View Camera
- Rear View Mirrors (2)
- RemoteCARE Support System (GPS)
- Roof Sun Shade
- Safety Glass Windows
- SCM Air-Suspension Seat with Tilt & Heater
- Seat Recline
- Selectable Monitor Languages
- Small Storage
- Travel Alarm with Cancel Switch
- Trip Meter (Digital)
- USB Input
- Wiper & Washer
- Wiper Switch on RH Joystick

### ENGINE

- 50A Alternator
- Air Filter (Double Element)
- Air Filter Restriction Indicator
- Air Pre-Cleaner (Cyclone type)
- Auto Warm-Up System

- Auto-Idle
- Auto-Idle Engine Shutdown
- Battery Disconnect Switch
- Cooling Fan - Reversing
- Diesel Oxidation Catalyst (DOC)
- Drain for Fuel Tank
- Dual Remote Fuel Filters with Water Separators
- EGR Coolers
- Emergency Engine Stop
- Engine Idle System
- Engine Oil Sample Port
- Engine Protection Feature
- External Fuel Gauge
- External DEF Gauge
- Fan Housing
- Fuel Cooler
- Fuel Filter Restriction Indicator
- Fuel Management System
- Fuel Shut-Off Valve
- Fuel Usage History
- Fuel Usage Monitor
- Glow Plug Pre-Heat
- Idle-Start
- Intercooler
- Neutral Start
- One-Touch Idle
- Passive Emissions Regeneration
- Radiator/Oil Cooler/Intercooler Protective Screen
- Remote Engine Oil Drain
- Remote Oil Filter
- Selective Catalytic Reduction (SCR)
- DEF Gauge on Monitor
- VGT Turbocharger

### HYDRAULICS

- Anti-Drift Valve (Arm & Boom)
- Arm Regeneration
- Arm Speed Assistance (2 Pump Flow)
- Attachment Cushion Valve
- Auto Swing Priority
- Auxiliary Flow Control
- Auxiliary Tool Settings (Memory)
- Auxiliary Valve
- Boom Regeneration
- Boom Speed Assistance (2 Pump Flow)
- Control Levers Pre-Wired for Auxiliary Hyd.
- Electronically Controlled Hydraulic Pumps
- Fire Wall
- Free Swing
- Hose Burst Check Valve
- Hydraulic Filter Restriction Indicator
- Hydraulic Oil Sample Port
- Long Life Hydraulic Oil (5,000 Hour)
- Neutral Pump De-Stroke

- Oil Cooler
- Power Save
- Pressure Reading on Monitor
- Pump Stand-By Pressure
- Single Pedal Travel
- Straight Travel Circuit

### UNDERCARRIAGE

- 750 mm (29.5" in) 3-Bar Steel Grousers
- Carbody Belly Pan (Swivel Guarding)
- Double Track Guard
- Lashing Points (Tie-Downs)
- Long Undercarriage
- Sealed Link Chain
- Steps
- Strutted Track Chain
- Retractable Carbody

### UPPERSTRUCTURE

- Belly Pans
- Center Cover (Over Main CV)
- Fuel Tank Belly Pan
- Hand Rail (RH access)
- ISO Guard Rails
- Lifting Eyes for Counterweight
- Lockable Fuel Cap and Service Doors
- Turntable Tub
- Work Lights (Boom and Right Front Corner, LED)
- Catwalks

### ATTACHMENT

- 25' 6" (7.77 m) Arm
- 30' 4" (9.25 m) Main Boom Section
- Boom Work Light (2 LED)
- Chrome Pins - Boom Foot, Boom Cylinder Base
- Easy Maintenance System (EMS) - Boom Foot
- Remote Lube Bank
- Teardrop Pin Retention Keepers - Boom Foot and Boom Cylinder Base

### PARTS KIT

- Engine Manual
- Engine Oil Filter
- Filter Wrench
- Fuel Filters
- Grease Gun
- Green Plug Drain Hose for Engine Oil Drain
- Hydraulic Return Filter
- Ignition Keys
- Pilot Circuit Hydraulic Filter
- Rearview Mirrors

## OPTIONAL EQUIPMENT

### CAB

- 270° WAVES™ Camera System
- Cab Light (Rear, LED)
- Cab Sun Screen (rear)
- FOPS Head Guard (Level 2)
- Front Guard (OPG 2)

- LED Light Kit for Side Camera (2), LED Lights for Rear Camera (2)
- Rain Deflector
- Under Cab Camera
- Side view camera

### UNDERCARRIAGE

- Full-Length Track Guard
- 600 mm (23.6" in) 3-Bar Steel Grousers

### ATTACHMENT

- Fully Automatic Lube System

### Litho in USA 6/21 #LBX2405

LBX® and Link-Belt® are registered trademarks. Copyright 2021. All rights reserved. We are constantly improving our products and therefore reserve the right to change designs and specifications.