

Link-Belt
EXCAVATORS

260 X4S

SPEC SHEET (PRELIMINARY)



260 X4S SPECIFICATIONS

SAE Net Horsepower
177 hp (132.1 kW)

Operating Weight
57,300 lbs (26,000 kg)

Swing Torque
55,300 lbf-ft (74.9 kNm)



ENGINE

Engine	Isuzu AQ-4HK1X Final Tier 4 turbocharged diesel engine
SAE J 1349 net horsepower	177 HP (132.1 kW) @ 2000 min-1 (rpm)
Displacement	317 cu in (5.2 L)
Maximum Torque	458 lbf-ft (621 N-m) @ 1800 min-1 (rpm)
Starter	24 V - 5.0 kW
Alternator	85 amp
Voltage	24 V

HYDRAULIC SYSTEM

Hydraulic Pumps

Pump Output	2 x 61.8 gpm (234 L/min)
Pilot Pump Maximum Flow	5.3 gpm (20 L/min)

Relief Valve Settings

Boom Up / Arm / Bucket	4,970 psi (34.3 MPa)
in Power Boost	5,410 psi (37.3 MPa)
Swing Circuit	4,190 psi (28.9 MPa)
Travel Circuit	4,970 psi (34.3 MPa)

Hydraulic Cylinders

Number of Cylinders - Bore x Stroke

Boom	2 - 5.1" x 52.6" (130 mm x 1335 mm)
Arm	5.7" x 65.4" (145 mm x 1660 mm)
Bucket	5.1" x 42.1" (130 mm x 1070 mm)

SWING

Swing Speed	10.6 rpm
Tail Swing	9'10" (2.99 m)
Swing Torque	55,300 lbf-ft (74.9 kNm)

260 X4S SPECIFICATIONS

UNDERCARRIAGE

Carrier Rollers	2 per Side
Track Rollers	9 per Side
Track Link Pitch	7.5" (190 mm)
Shoes	51 per Side
Shoe Width	31.5" (800 mm)
Ground Pressure	5.7 psi (0.039 MPa)

TRAVEL SYSTEM

Travel Speeds	2.2 - 3.4 mph (3.5 - 5.5 km/h)
Drawbar Pull	45,000 lbf (200 kN)
Gradeability	70% (35°)

ATTACHMENT

HD Boom	19' 2" (5.85 m)
Available Arms	Digging Force
9' 10" (3.00 m)	26,980 lbf (120.0 kN)
with Auto Power Boost	29,230 lbf (130.0 kN)
8' 2" (2.50 m)	31,700 lbf (141.0 kN)
with Auto Power Boost	34,400 lbf (153.0 kN)
11' 6" (3.52 m)	24,050 lbf (107.0 kN)
with Auto Power Boost	26,080 lbf (116.0 kN)
Bucket Digging Force	36,420 lbf (162.0 kN)
with Auto Power Boost	39,570 lbf (176.0 kN)

LUBRICANT AND COOLANT CAPACITY

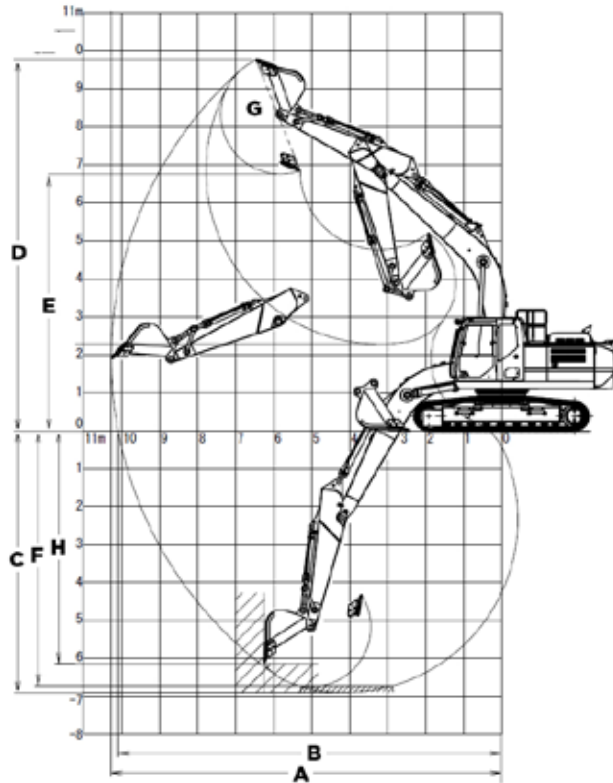
Fuel Tank	108 Gallons (410 Liters)
Hydraulic System	76.6 Gallons (290 Liters)
Hydraulic Tank	42 Gallons (162 Liters)
Final Drive (per side)	1.2 Gallons (4.5 Liters)
Swing Drive	2.5 Gallons (9.6 Liters)
Engine Oil	6.1 Gallons (23.1 Liters)
DEF Tank	22 Gallons (84 Liters)
Coolant System	8.5 Gallons (32.3 Liters)

OPERATING WEIGHT

Working weight with 31.5" (800 mm) shoes, 19' 2" (5.85 m) boom, 9' 10" (3.00 m) arm, 1,940 lbs (880 kg) bucket, 11,100 lbs (5,050 kg) counterweight	57,300 lbs (26,000 kg)
---	------------------------

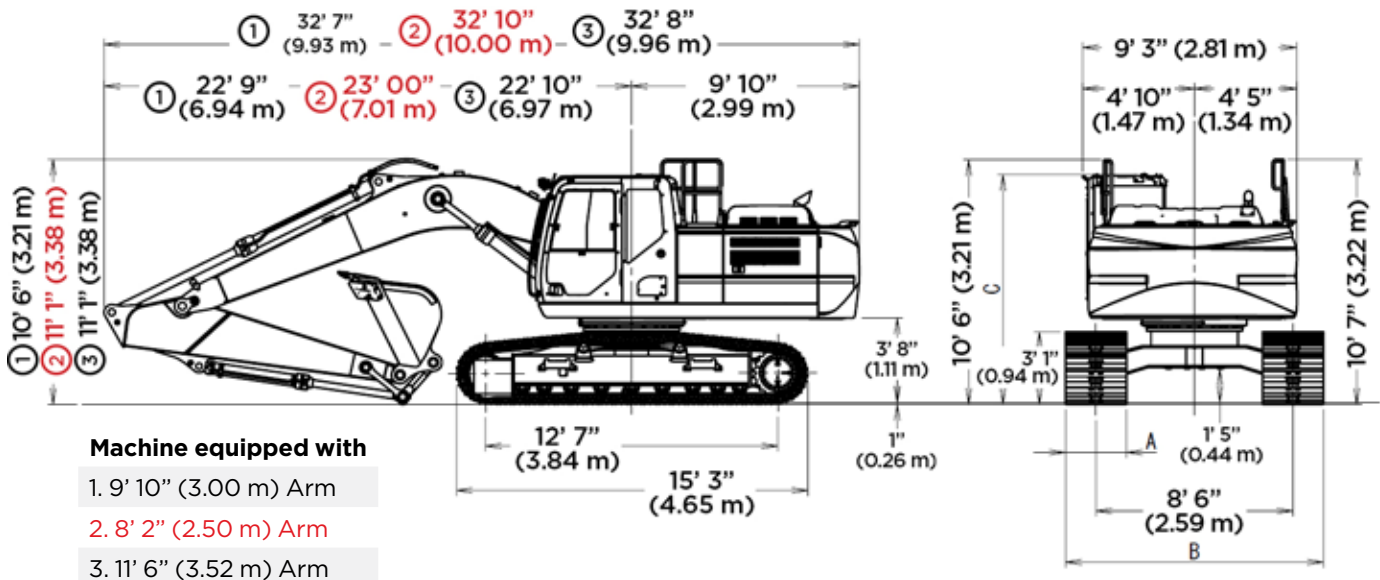
260 X4S SPECIFICATIONS

WORKING RANGE



Machine Equipped with 19' 2" (5.85 m) Boom	Arm 9' 10" (3.00 m)	Arm 8' 2" (2.50 m)	Arm 11' 6" (3.52 m)
A. Maximum reach	33' 9" (10.28 m)	32' 3" (9.82 m)	35' 5" (10.79 m)
B. Maximum reach @ ground level	33' 2" (10.10 m)	31' 7" (9.63 m)	34' 10" (10.62 m)
C. Maximum dig depth	22' 8" (6.9 m)	21' 0" (6.40 m)	24' 4" (7.42 m)
D. Maximum dig height	32' 0" (9.76 m)	31' 4" (9.56 m)	33' 0" (10.07 m)
E. Maximum dump height	22' 2" (6.76 m)	21' 6" (6.55 m)	23' 10" (7.06 m)
F. Digging depth 8' (2.44 m) level bottom	22' 1" (6.74 m)	20' 4" (6.21 m)	23' 10" (7.27 m)
G. Bucket rotation	175°	175°	175°
H. Maximum vertical wall depth	20' 2" (6.14 m)	18' 8" (5.70 m)	21' 11" (6.68 m)

TRAVEL DIMENSIONS



Undercarriage	STD	OPTION	
A. Shoe Width	31.5" (800 mm)	23.6" (600 mm)	27.5" (700 mm)
B. Overall Width	11' 2" (3.39 m)	10' 6" (3.19 m)	10' 10" (3.29 m)

Cab Specification	C: Cab Height
STD. (No Equipment)	9' 11" (3.02 m)
With Head Guard	10' 3" (3.13 m)
With Vandal Cover	10' 3" (3.13 m)
With Head Guard & Vandal Cover	10' 6" (3.21 m)

260 X4S SPECIFICATIONS

LIFT CAPACITIES - RADIUS OF LOAD*

9' 10" (3.00 M) ARM WITH 19' 2" (5.85 M) BOOM WITH POWER-BOOST APPLIED

		5' 0" (1.5 m)		10' 0" (3.0 m)		15' 0" (4.5 m)		20' 0" (6.0 m)		25' 0" (7.5 m)		30' 0" (9.0 m)		Cap at Max. Reach	
End	Side	End	Side	End	Side	End	Side	End	Side	End	Side	End	Side	End	Side
+25' 0"	lbs													10,100*	10,100*
(7.5 m)	kgs													4580*	4580*
+20' 0"	lbs													9,350*	9,350*
(6.0 m)	kg													4,240*	4,240*
+15' 0"	lbs							15,800*	15,300	14,750*	10,800			9,150*	9,150*
(4.5 m)	kg							7,165*	6,935	6,690*	4,895			4,150*	4,150*
+10' 0"	lbs					23,250*	22,300	18,150*	14,600	15,200	10,450			9,300*	8,650
(3.0 m)	kg					10,545*	10,115	8,230*	6,620	6,890	4,740			4,215*	3,920
+5' 0"	lbs					27,900*	20,850	20,550*	13,900	14,850	10,150			9,850*	8,350
(1.5 m)	kg					12,655*	9,455	9,320*	6,300	6,735	4,600			44,658	3,785
Ground	lbs			15,600*	15,600*	30,350*	20,100	20,250	13,400	14,550	9,850			10,750*	8,500
Line	kg			7,075*	7,075*	13,765*	9,115	9,185	6,075	6,595	4,465			4,875*	3,855
-5' 0"	lbs	16,900*	16,900*	27,900*	27,900*	30,500*	19,850	20,000	13,200	14,450	9,800			12,500*	9,200
(1.5 m)	kg	7,665*	7,665*	12,655*	12,655*	13,830*	9,000	9,070	5,985	6,550	4,445			5,665*	4,170
-10' 0"	lbs	29,900*	29,900*	40,050*	39,550	28,450*	20,000	20,100	13,250					15,950*	10,800
(3.0 m)	kg	13,560*	13,560*	18,165*	17,935	12,900*	9,070	9,115	6,010					7,230*	4,895
-15' 0"	lbs			31,900*	31,900*	23,050*	20,550							16,950*	14,850
(4.5 m)	kg			14,465*	14,465*	10,455*	9,320							7,685*	6,735

8' 2" (2.50 M) ARM WITH 19' 2" (5.85 M) BOOM WITH POWER-BOOST APPLIED

		5' 0" (1.5 m)		10' 0" (3.0 m)		15' 0" (4.5 m)		20' 0" (6.0 m)		25' 0" (7.5 m)		30' 0" (9.0 m)		Cap at Max. Reach	
End	Side	End	Side	End	Side	End	Side	End	Side	End	Side	End	Side	End	Side
+25' 0"	lbs													14,750*	14,750*
(7.5 m)	kgs													6,690*	6,690*
+20' 0"	lbs							15,600*	15,500					13,500*	12,100
(6.0 m)	kg							7,075*	7,030					6,120*	5,485
+15' 0"	lbs					20,000*	20,000*	16,950*	15,050	15,400	10,600			13,150*	10,200
(4.5 m)	kg					9,070	9,070	7,685*	6,825	6,985	4,805			5,960*	4,625
+10' 0"	lbs					25,050*	21,850	19,150*	14,400	15,100	10,350			13,350*	9,300
(3.0 m)	kg					11,360	9,910	8,685*	6,530	6,845	4,690			6,055*	4,215
+5' 0"	lbs					29,150*	20,550	20,650	13,750	14,800	10,100			13,200	9,000
(1.5 m)	kg					13,220	9,320	9,365	6,235	6,710	4,580			5,985	4,080
Ground	lbs					30,700*	20,000	20,200	13,350	14,550	9,900			13,550	9,250
Line	kg					13,925	9,070	9,160	6,055	6,595	4,490			6,145	4,195
-5' 0"	lbs			28,500*	28,500*	30,050*	19,900	20,050	13,250					14,950	10,100
(1.5 m)	kg			12,925*	12,925*	13,630	9,025	9,090	6,010					6,780	4,580
-10' 0"	lbs			37,050*	37,050*	27,150*	20,200	20,100*	13,450					17,800*	12,250
(3.0 m)	kg			16,805*	16,805*	12,315	9,160	9,115*	6,100					8,070*	5,555
-15' 0"	lbs			27,350*	27,350*	19,750*	19,750*							17,000*	17,000*
(4.5 m)	kg			12,405*	12,405*	8,955	8,955							7,710*	7,710*

260 X4S SPECIFICATIONS

LIFT CAPACITIES - RADIUS OF LOAD*

11' 6" (3.52 M) ARM WITH 19' 2" (5.85 M) BOOM WITH POWER-BOOST APPLIED

		5' 0" (1.5 m)		10' 0" (3.0 m)		15' 0" (4.5 m)		20' 0" (6.0 m)		25' 0" (7.5 m)		30' 0" (9.0 m)		Cap at Max. Reach	
End	Side	End	Side	End	Side	End	Side	End	Side	End	Side	End	Side	End	Side
+25' 0"	lbs													8,050*	8,050*
(7.5 m)	kgs													3650*	3650*
+20' 0"	lbs									11,950*	11,050			7,500*	7,500*
(6.0 m)	kg									5,420*	5,010			3,400*	3,400*
+15' 0"	lbs							14,450*	14,450*	13,600*	10,850			7,350*	7,350*
(4.5 m)	kg							6,550*	6,550*	6,165*	4,920			3,330*	3,330*
+10' 0"	lbs			32,450*	32,450*	21,200*	21,200*	16,900*	14,700	14,850*	10,500			7,450*	7,450*
(3.0 m)	kg			14,715*	14,715*	9,615*	9,615*	7,665*	6,665	6,735*	4,760			3,375*	3,375*
+5' 0"	lbs					26,300*	21,100	19,550*	13,950	14,850	10,100	8,900*	7,700	7,800*	7,600
(1.5 m)	kg					11,925*	9,570	8,865*	6,325	6,735	4,580	4,035*	3,490	3,535*	3,445
Ground	lbs			17,350*	17,350*	29,500*	20,100	20,200	13,350	14,500	9,800			8,450*	7,750
Line	kg			7,865*	7,865*	13,380*	9,115	9,160	6,055	6,575	4,445			3,830*	3,515
-5' 0"	lbs	15,400*	15,400*	26,000*	26,000*	30,450*	19,650	19,850	13,050	14,300	9,600			9,650*	8,250
(1.5 m)	kg	6,985*	6,985*	11,790*	11,790*	13,810*	8,910	9,000	5,915	6,485	4,350			4,375*	3,740
-10' 0"	lbs	25,650*	25,650*	39,000*	38,900	29,250*	19,700	19,850	13,000	14,400	9,700			11,800*	9,500
(3.0 m)	kg	11,630*	11,630*	17,690*	17,640	13,265*	8,935	9,000	5,895	6,530	4,395			5,350*	4,305
-15' 0"	lbs	38,950*	38,950*	35,550*	35,550*	25,250*	20,100	18,200*	13,350					16,100*	12,300
(4.5 m)	kg	17,665*	17,665*	16,125*	16,125*	11,450*	9,115	8,255*	6,055					7,300*	5,575

*NOTES: EXCAVATOR LIFTING CAPACITIES

- 1) The lift capacities above are based on the ISO standard, ISO 10567:2007 - "Earthmoving Machinery - Hydraulic Excavators - Lift Capacity"
- 2) Lifting capacities shown should not be exceeded. The weight of all lifting accessories must be deducted from the above lifting capacities. The use of a work tool attachment point as the lift point could affect the machine lift performance.
- 3) Lifting capacities are based on the machine standing on a firm, uniform supporting surface. Users must make allowances for job conditions such as soft or uneven ground.
- 4) Lifting capacities shown do not exceed 75% of the minimum tipping loads or 87% of the hydraulic capacities. Lifting capacities marked with an asterisk (*) are limited by hydraulic capacities.
- 5) The least stable position is lifting over the side.
- 6) Operators should be fully acquainted with the Operator's Manual & Operating Safety Booklet, furnished by LBX Company LLC before operating the machine.
- 7) Lift capacities apply only to the machine as originally manufactured and normally equipped by LBX Company LLC.
- 8) This lift chart is without bucket, bucket cylinder, and bucket linkage. If the machine is equipped with any of these components the weight of those components must be deducted from the listed lifting capacities.
- 9) Weight of removed components: bucket cylinder 435.4 lbs (197.5 kg) and linkage 568.1 lbs (257.7 kg).

260 X4S SPECIFICATIONS

STANDARD EQUIPMENT

CAB

- 270° WAVES 3-Camera System
- 12V Power Outlet
- AM/FM Sound System
- Anti-Theft Device
- Auxiliary Switches on Control Lever
- Bluetooth
- Cab Air Filter - External
- Cab Handrails
- Cab Interior Light
- Cab ISO-Mounts
- LED Cab Lights
- Clear Roof Window
- Climate Control A/C and Heater
- Cup Holder (2)
- Defroster
- Digital Clock
- Emergency Exit and Hammer
- Face Vent
- Floor Mat (Split)
- Front Window One-Touch Lock
- Gate Lock Hydraulic Activation
- Horn
- Hour Meter (Digital)
- LCD 10" Color Monitor
- Maintenance Interval Reminders
- MP3 Auxiliary Input
- On-Board Diagnostic
- Radio Mute Switch
- Rear View Camera
- Rear View Mirrors (2)
- RemoteCARE Support System (GPS)
- Roof Sun Shade
- ROPS/FOPS Level 1 Certified Structure
- Safety Glass Windows
- SCM Air-Suspension Seat with Tilt & Heater
- Seat Recline
- Selectable Monitor Languages
- Small Storage

- Smart Phone Tray
- Travel Alarm with Cancel Switch
- Trip Meter (Digital)
- Wiper & Washer
- Wiper Switch on RH Joystick

ENGINE

- 80A Alternator
- Air Filter (Double Element)
- Air Filter Restriction Indicator
- Air Pre-Cleaner
- Auto Warm-Up System
- Auto-Idle
- Auto-Idle Shutdown
- Battery Disconnect Switch w/ LED Light
- Cooling Fan
- DEF Gauge on Monitor
- Diesel Particulate Filter (DPF)
- Diesel Oxidation Catalyst (DOC)
- Drain for Fuel Tank
- Dual Remote Fuel Filters with Water Separators
- EGR Coolers
- Emergency Engine Stop
- Engine Oil Sample Port
- Engine Protection Feature
- External Fuel Gauge
- External DEF Gauge
- Fan Belt Auto Tensioner
- Fan Housing
- Fuel Cooler
- Fuel Filter Restriction Indicator
- Fuel Management System
- Fuel Usage History
- Fuel Usage Monitor
- Glow Plug Pre-Heat
- Idle-Start
- Intercooler

- Neutral Start
- One-Touch Idle
- Radiator / Oil Cooler / Intercooler Protective Screens
- Remote Engine Oil Drain
- Remote Oil Filter
- Selective Catalytic Reduction (SCR)
- Turbocharger

HYDRAULICS

- Anti-drift valves (Arm & Boom)
- Arm Regeneration
- Arm Speed Assistance (2 Pump Flow)
- Attachment Cushion Valve
- Auto Swing Priority
- Custom Flow Control
- Auxiliary Tool Settings (Custom Naming)
- Auxiliary Valve
- Boom Regeneration
- Boom Speed Assistance (2 Pump Flow)
- Bucket Curl Assist
- Control Levers Pre-Wired for Auxiliary Hyd.
- Pattern Control Valve (2 way)
- Electronically Controlled Hydraulic Pumps
- Fire Wall
- Free Swing
- Hydraulic Filter Restriction Indicator
- Hydraulic Oil Sample Port
- Long Life Hydraulic Oil (5,000 Hour)
- Neutral Pump De-Stroke
- Oil Cooler
- Power Boost
- Power Save
- Pressure Reading on Monitor

- Pump Stand-By Pressure

UNDERCARRIAGE

- 800 mm shoes (31.5 in) 3-Bar Steel
- Extended Steps
- Lashing Points (Tie-Downs)
- Sealed Link Chain
- Single Track Guide
- Strutted Track Chain
- Swivel Guard

UPPERSTRUCTURE

- Counterweight (11,100 lbs)
- Center Cover (Over Main CV)
- Fuel Tank Belly Pan
- ISO Guard Rails
- LED Tool Box Light
- Lockable Fuel Cap and Service Doors
- Lockable Hydraulic Oil Tank Cap
- Lockable Engine Hood
- Lockable Tool Box

ATTACHMENT

- 9' 10" (3.00 m) Arm
- 19' 2" (5.85 m) HD Boom Section
- Auxiliary Pipe Brackets
- Bucket Anti Clatter
- Chrome Pins
- HD Bucket Linkage
- LED Boom Light
- Quick Coupler Lines
- Precision Grade Brackets
- Teardrop Pin Retention Keepers

260 X4S SPECIFICATIONS

OPTIONAL EQUIPMENT

CAB

- 270° WAVES+ 3-Camera System
- Cab Sun Visor (Front)
- CAB Head Guard (FOPS Level 2)
- Front Guard (Mesh)
- Front Guard (BAR - OPG Level 1)
- Front Guard (BAR - OPG Level 2)
- LED Lights for WAVES Cameras (4)
- Rain Deflector
- Vandal Cover (Front Window)

ENGINE

- Reversible Cooling Fan
- Tropical Package

HYDRAULICS

- Hose Burst Check Valve

AUXILIARY HYDRAULIC OPTIONS

- Multi-Function Aux. w/ in-cab Pressure Settings and Proportional Joystick
- Combination Aux. w/ in-cab Pressure Settings and Proportional Joystick

UNDERCARRIAGE

- 600 mm shoes (23.6 in) 3-Bar Steel
- 700 mm shoes (27.5 in) 3-Bar Steel
- Triple Track Guards

ATTACHMENT

- 9' 10" (3.00 m) HD Arm
- 11' 7" (3.52 m) Arm
- 8' 2" (2.50 m) HD Arm

BUCKET SIZES



Scan the QR code to find the right size bucket, thumb, and coupler combination for the 260 X4S.

Or visit qrco.de/bdr07z



#LBX2491 · 2/24

LBX® and Link-Belt® are registered trademarks. Copyright 2023. All rights reserved. We are constantly improving our products and therefore reserve the right to change designs and specifications.

Link-Belt
EXCAVATORS