

Link-Belt
EXCAVATORS

220 & 260 X4S LONG FRONT

SPEC SHEET (PRELIMINARY)



220 X4S LF SPECIFICATIONS

SAE Net Horsepower
160 hp (119.3 kW)

Operating Weight
52,000 lbs (23,600 kg)

Swing Torque
38,500 lbf-ft (52.2 kNm)



ENGINE

Engine	Isuzu AR-4HK1X Final Tier 4 turbocharged diesel engine
SAE J 1349 net horsepower	160 HP (119.3 kW) @ 1800 min-1 (rpm)
Displacement	317 cu in (5.2 L)
Maximum Torque	457 lbf-ft (620 N-m) @ 1600 min-1 (rpm)
Starter	24 V - 5.0 kW
Alternator	85 amp
Voltage	24 V

HYDRAULIC SYSTEM

Hydraulic Pumps

Pump Output	2 x 55.7 gpm (211 L/min)
Pilot Pump Maximum Flow	4.8 gpm (18 L/min)

Relief Valve Settings

Boom Up / Arm Out	4,970 psi (34.3 MPa)
in Power Boost	5,410 psi (37.3 MPa)
Swing Circuit	3,480 psi (24.0 MPa)
Travel Circuit	4,970 psi (34.3 MPa)

Hydraulic Cylinders

Number of Cylinders - Bore x Stroke

Boom	2 - 4.7" x 49.4" (120 mm x 1255 mm)
Arm	5.7" x 64.0" (145 mm x 1627 mm)
Bucket	3.7" x 34.7" (95 mm x 881 mm)

SWING

Swing Speed	6.0 rpm
Tail Swing	9' 3" (2.83 m)
Swing Torque	38,500 lbf-ft (52.2 kNm)

220 X4S LF SPECIFICATIONS

UNDERCARRIAGE

Carrier Rollers	2 per Side
Track Rollers	8 per Side
Track Link Pitch	7.5" (190 mm)
Shoes	49 per Side
Shoe Width	31.5" (800 mm)
Ground Pressure	5.4 psi (0.037 MPa)

TRAVEL SYSTEM

Travel Speeds	2.1 - 3.5 mph (3.4 - 5.6 km/h)
Drawbar Pull	42,000 lbf (187 kN)
Gradeability	70% (35°)

ATTACHMENT

Boom	28' 7" (8.7 m)
Available Arms	Digging Force
21' 0" (6.4 m)	10,300 lbf (46.0 kN)
Bucket Digging Force	14,600 lbf (65.0 kN)

LUBRICANT AND COOLANT CAPACITY

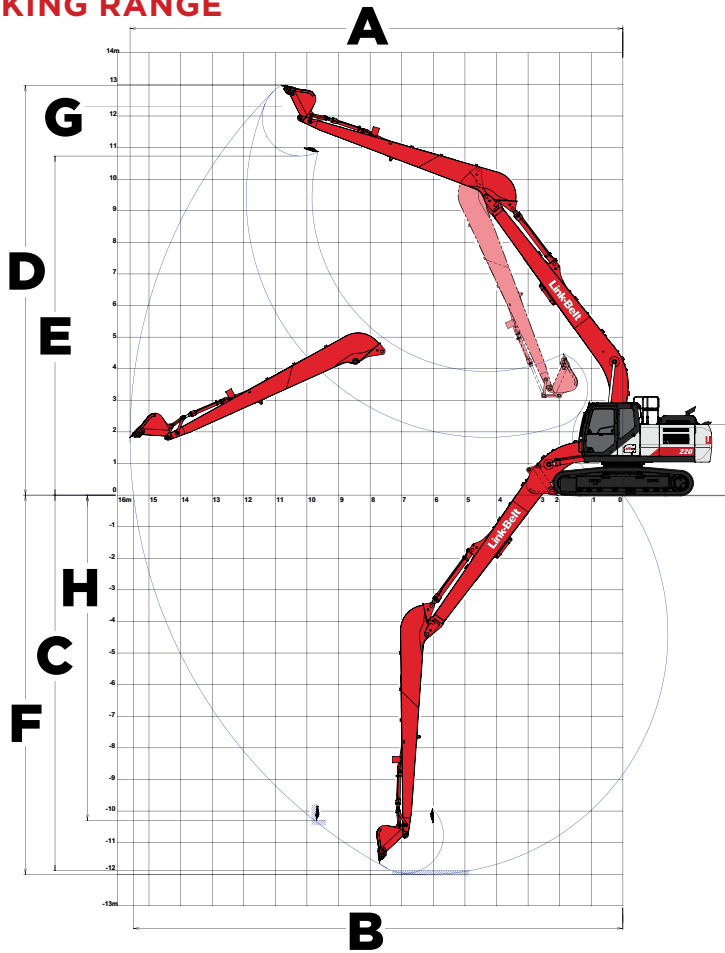
Fuel Tank	108 Gallons (410 Liters)
Hydraulic System	74 Gallons (280 Liters)
Hydraulic Tank	42 Gallons (162 Liters)
Final Drive (per side)	1.2 Gallons (4.5 Liters)
Swing Drive	1.3 Gallons (5.0 Liters)
Engine Oil	6.1 Gallons (23.1 Liters)
DEF Tank	22 Gallons (84 Liters)
Coolant System	8.5 Gallons (32.3 Liters)

OPERATING WEIGHT

Working weight with 31.5" (800 mm) shoes, 28' 7" (8.7 m) boom, 21' 0" (6.4 m) arm, 750 lbs (340 kg) bucket,	52,000 lbs (23,600 kg)
---	------------------------

220 X4S LF SPECIFICATIONS

WORKING RANGE



Machine Equipped with 28' 7" (8.7 m) Boom
Arm 20' 1" (6.40 m)

A. Maximum reach 51' 2" (15.6 m)

B. Maximum reach @ ground level 50' 10" (15.49 m)

C. Maximum dig depth 39' 5" (12.01 m)

D. Maximum dig height 42' 7" (12.97 m)

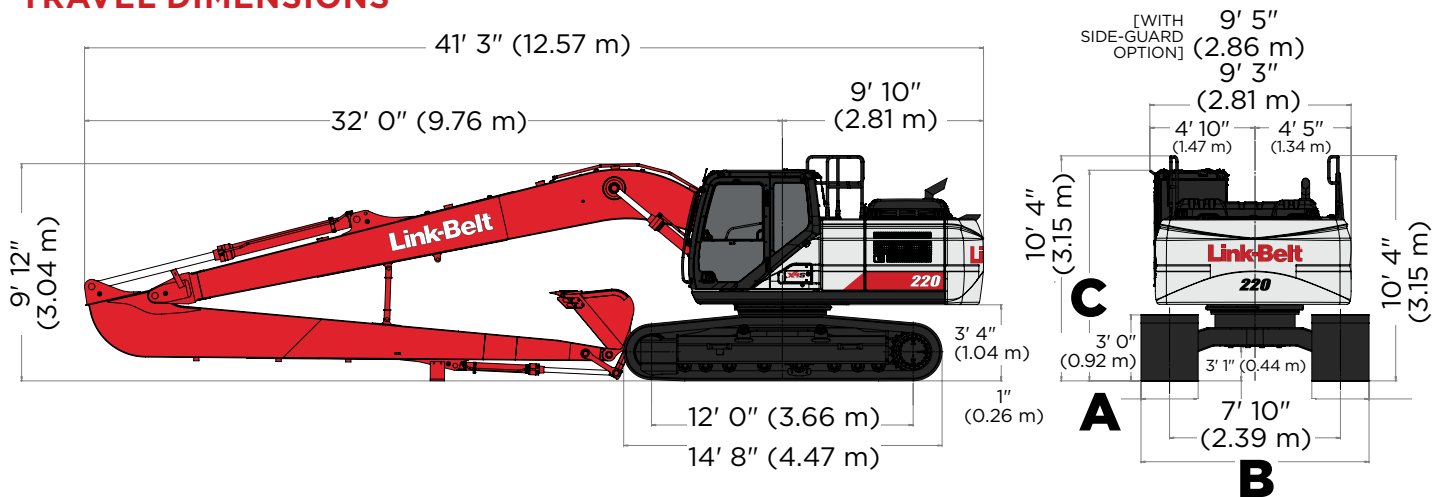
E. Maximum dump height 35' 2" (10.73 m)

F. Digging depth 39' 0" 8' (2.44 m) level bottom 11.89 m

G. Bucket rotation 178°

H. Maximum vertical wall depth 33' 10" (10.30 m)

TRAVEL DIMENSIONS



Undercarriage	STD	OPTION
A. Shoe Width	31.5" (800 mm)	27.6" (700 mm)
B. Overall Width	10' 6" (3.19 m)	10' 2" (3.09 m)

Cab Specification	C: Cab Height
STD. (No Equipment)	9' 8" (2.95 m)
With Head Guard	10' 1" (3.07 m)
With Vandal Cover	10' 1" (3.06 m)
With Head Guard & Vandal Cover	10' 4" (3.15 m)

220 X4S LF SPECIFICATIONS

LIFT CAPACITIES - RADIUS OF LOAD*

21' 0" (6.4 M) ARM WITH 28' 7" (8.7 M) BOOM WITH POWER-BOOST APPLIED

		0' 0" (0.0 m)		5' 0" (1.5 m)		10' 0" (3.0 m)		15' 0" (4.5 m)		20' 0" (6.0 m)		25' 0" (7.5 m)		30' 0" (9.0 m)	
End	Side	End	Side	End	Side	End	Side	End	Side	End	Side	End	Side	End	Side
15' 0" (4.5m)	lbs kg													5,800*	5,800*
10' 0" (3.0m)	lbs kg					18,350*	18,350*			9,100*	9,100*	7,550*	7,550*	6,600*	6,400
5' 0" (1.5m)	lbs kg					4,800*	4,800*	15,800*	15,450	11,150*	10,550	8,800*	7,750	7,400*	5,950
Ground	lbs kg					4,700*	4,700*	11,350*	11,350*	12,850*	9,550	9,950*	7,100	8,200*	5,500
-5' 0" (-1.5m)	lbs kg			4,250*	4,250*	5,950*	5,950*	10,650*	10,650*	14,050*	8,900	10,700	6,650	8,300	5,150
-10' 0" (-3.0m)	lbs kg	5,750*	5,750*	5,900*	5,900*	7,600*	7,600*	11,600*	11,600*	14,350	8,550	10,400	6,350	8,050	4,950
-15' 0" (-4.5m)	lbs kg	7,100*	7,100*	7,650*	7,650*	9,450*	9,450*	13,400*	12,750	14,200	8,400	10,250	6,200	7,950	4,850
-20' 0" (-6.0m)	lbs kg			9,550*	9,550*	11,650*	11,650*	15,950*	13,000	14,300	8,500	10,250	6,200	7,950	4,850
-25' 0" (-7.5m)	lbs kg	3,860*	3,860*	4,260*	4,260*	5,170*	5,170*	7,020*	6,030	6,640	3,940	4,760	2,880	3,690	2,240
-30' 0" (-9.0m)	lbs kg			11,600*	11,600*	14,200*	14,200*	17,900*	13,400	13,700*	8,700	10,450	6,350	8,100	5,000
-35' 0" (-10.5m)	lbs kg			5,170*	5,170*	6,290*	6,290*	8,300*	6,210	6,340*	4,040	4,840	2,950	3,750	2,300
						17,350*	17,350*	15,550*	14,000	12,050*	9,150	9,600*	6,700	7,550*	5,300
						7,650*	7,650*	7,280*	6,480	5,640*	4,220	4,500*	3,090	3,590*	2,430
										9,050*	9,050*				
								5,630*	5,630*	4,370*	4,370*				

		35' 0" (10.5 m)		40' 0" (12.0 m)		45' 0" (13.5 m)		Cap At Max. Reach	
End	Side	End	Side	End	Side	End	Side	End	Side
35' 0" (10.5m)	lbs kg	4,650*	4,650*					3,100*	3,100*
30' 0" (9.0m)	lbs kg			3,550*	3,550*			2,950*	2,950*
25' 0" (7.5m)	lbs kg	4,700*	4,700*	4,800*	4,400			2,900*	2,900*
20' 0" (6.0m)	lbs kg	5,000*	5,000*	4,950*	4,300	3,000*	3,000*	2,900*	2,900*
15' 0" (4.5m)	lbs kg	5,450*	5,300	5,250*	4,100	4,400*	3,200	2,950*	2,950*
10' 0" (3.0m)	lbs kg	6,000*	5,000	5,600*	3,900	4,950	3,100	3,050*	2,800
5' 0" (1.5m)	lbs kg	6,550*	4,650	5,850	3,700	4,800	3,000	3,200*	2,700
Ground	lbs kg	6,900	4,400	5,650	3,550	4,700	2,900	3,450*	2,650
-5' 0" (-1.5m)	lbs kg	6,700	4,150	5,500	3,400	4,600	2,800	3,750*	2,700
-10' 0" (-3.0m)	lbs kg	6,500	4,000	5,400	3,300			4,150*	2,800
-15' 0" (-4.5m)	lbs kg	6,450	3,900	5,350	3,250			4,800*	3,000
-20' 0" (-6.0m)	lbs kg	6,450	3,950					5,550	3,400
-25' 0" (-7.5m)	lbs kg	6,650	4,100					6,500	4,050
-30' 0" (-9.0m)	lbs kg							7,350*	5,200
-35' 0" (-10.5m)	lbs kg							7,550*	7,550*

- The lift capacities above are based on the ISO standard, ISO 10567:2007 "Earthmoving Machinery - Hydraulic Excavators - Lift Capacity"
- Lifting capacities shown should not be exceeded. The weight of all lifting accessories must be deducted from the above lifting capacities. The use of a work tool attachment point as the lift point could affect the machine lift performance.
- Lifting capacities are based on the machine standing on a firm, uniform supporting surface. Users must make allowances for job conditions such as soft or uneven ground.
- Lifting capacities shown do not exceed 75% of the minimum tipping loads or 87% of the hydraulic capacities. Lifting capacities marked with an asterisk (*) are limited by hydraulic capacities.
- The least stable position is lifting over the side.
- Operators should be fully acquainted with the Operator's Manual & Operating Safety Booklet, furnished by LBX Company LLC before operating the machine.
- Lift capacities apply only to the machine as originally manufactured and normally equipped by LBX Company LLC.
- This lift chart is without bucket, bucket cylinder, and bucket linkage. If the machine is equipped with any of these components the weight of those components must be deducted from the listed lifting capacities.

260 X4S LF SPECIFICATIONS



SAE Net Horsepower
177 hp (132.1 kW)

Operating Weight
63,900 lbs (29,000 kg)

Swing Torque
51,600 lbf-ft (69.9 kNm)

ENGINE

Engine	Isuzu AQ-4HK1X Final Tier 4 turbocharged diesel engine
SAE J 1349 net horsepower	177 HP (132.1 kW) @ 2000 min-1 (rpm)
Displacement	317 cu in (5.2 L)
Maximum Torque	458 lbf-ft (621 N-m) @ 1800 min-1 (rpm)
Starter	24 V - 5.0 kW
Alternator	85 amp
Voltage	24 V

HYDRAULIC SYSTEM

Hydraulic Pumps

Pump Output	2 x 61.8 gpm (234 L/min)
Pilot Pump Maximum Flow	5.3 gpm (20 L/min)

Relief Valve Settings

Boom Up / Arm Out	4,970 psi (34.3 MPa)
in Power Boost	5,410 psi (37.3 MPa)
Swing Circuit	3,920 psi (27.0 MPa)
Travel Circuit	4,970 psi (34.3 MPa)

Hydraulic Cylinders

Number of Cylinders - Bore x Stroke

Boom	2 - 5.1" x 52.6" (130 mm x 1335 mm)
Arm	6.0" x 68.4" (150 mm x 1737 mm)
Bucket	3.7" x 34.7" (95 mm x 881 mm)

SWING

Swing Speed	5.4 rpm
Tail Swing	9'10" (2.99 m)
Swing Torque	51,600 lbf-ft (69.9 kNm)

260 X4S LF SPECIFICATIONS

UNDERCARRIAGE

Carrier Rollers	2 per Side
Track Rollers	9 per Side
Track Link Pitch	7.5" (190 mm)
Shoes	51 per Side
Shoe Width	31.5" (800 mm)
Ground Pressure	6.2 psi (0.043 MPa)

TRAVEL SYSTEM

Travel Speeds	2.2 - 3.4 mph (3.5 - 5.5 km/h)
Drawbar Pull	44,700 lbf (199 kN)
Gradeability	70% (35°)

ATTACHMENT

Boom	33' 9" (10.3 m)
Available Arms	Digging Force
26' 3" (8.00 m)	9,060 lbf (40.0 kN)
Bucket Digging Force	17,300 lbf (77.0 kN)

LUBRICANT AND COOLANT CAPACITY

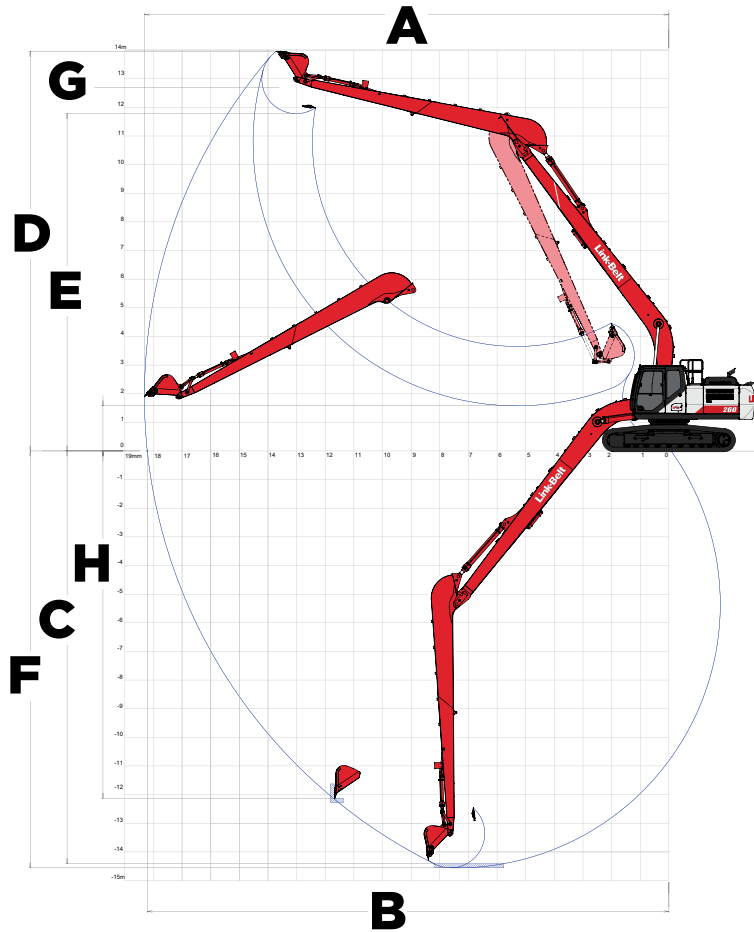
Fuel Tank	108 Gallons (410 Liters)
Hydraulic System	76.6 Gallons (290 Liters)
Hydraulic Tank	42 Gallons (162 Liters)
Final Drive (per side)	1.2 Gallons (4.5 Liters)
Swing Drive	2.5 Gallons (9.6 Liters)
Engine Oil	6.1 Gallons (23.1 Liters)
DEF Tank	22 Gallons (84 Liters)
Coolant System	8.5 Gallons (32.3 Liters)

OPERATING WEIGHT

Working weight with 31.5" (800 mm) shoes, 33' 9" (10.3 m) boom, 26' 3" (8.00 m) arm, 750 lbs (340 kg) bucket, 16,200 lbs (7,350 kg) counterweight	63,900 lbs (29,000 kg)
---	------------------------

260 X4S LF SPECIFICATIONS

WORKING RANGE



Machine Equipped with 33' 9" (10.3 m) Boom **Arm 26' 3" (8.00 m)**

A. Maximum reach 60' 1" (18.32 m)

B. Maximum reach @ ground level 59' 9" (18.22 m)

C. Maximum dig depth 47' 9" (14.56 m)

D. Maximum dig height 45' 9" (13.95 m)

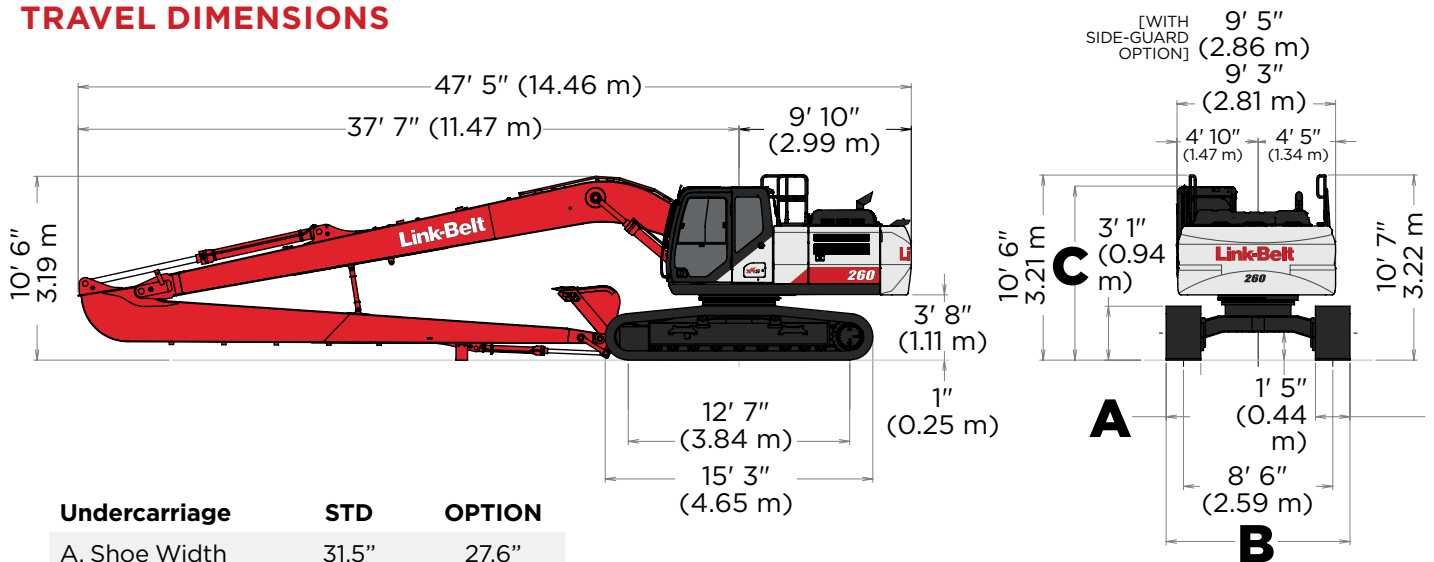
E. Maximum dump height 38' 8" (11.78 m)

F. Digging depth 8' (2.44 m) level bottom 47' 3" (14.41 m)

G. Bucket rotation 178°

H. Maximum vertical wall depth 39' 8" (12.13 m)

TRAVEL DIMENSIONS



Undercarriage	STD	OPTION
A. Shoe Width	31.5" (800 mm)	27.6" (700 mm)
B. Overall Width	11' 2" (3.39 m)	10' 10" (3.29 m)

Cab Specification	C: Cab Height
STD. (No Equipment)	9' 11" (3.02 m)
With Head Guard	10' 3" (3.13 m)
With Vandal Cover	10' 3" (3.13 m)
With Head Guard & Vandal Cover	10' 6" (3.21 m)

260 X4S LF SPECIFICATIONS

LIFT CAPACITIES - RADIUS OF LOAD*

26' 3" (8.00 M) ARM WITH 33' 9" (10.3 M) BOOM WITH POWER-BOOST APPLIED

		0' 0" (0.0 m)		5' 0" (1.5 m)		10' 0" (3.0 m)		15' 0" (4.5 m)		20' 0" (6.0 m)		25' 0" (7.5 m)		30' 0" (9.0 m)	
End	Side	End	Side	End	Side	End	Side	End	Side	End	Side	End	Side	End	Side
10' 0"	lbs					10,550*	10,550*					8,400*	8,400*	7,200*	7,200*
(3.0m)	kg					4,170*	4,170*					3,880*	3,880*	3,320*	3,320*
5' 0"	lbs					3,100*	3,100*	11,250*	11,250*	12,750*	12,750*	9,900*	9,900*	8,200*	8,200*
(1.5m)	kg					1,320*	1,320*	4,770*	4,770*	5,910*	5,910*	4,570*	4,570*	3,780*	3,780*
Ground	lbs					3,100*	3,100*	7,250*	7,250*	14,750*	13,200*	11,200*	9,900*	9,100*	7,750*
Line	kg					1,360*	1,360*	3,160*	3,160*	6,820*	6,100*	5,180*	4,590*	4,210*	3,600*
-5' 0"	lbs			2,800*	2,800*	3,950*	3,950*	6,850*	6,850*	13,200*	12,150*	12,300*	9,150*	9,900*	7,200*
(-1.5m)	kg			1,270*	1,270*	1,760*	1,760*	3,020*	3,020*	5,730*	5,620*	5,670*	4,230*	4,580*	3,340*
-10' 0"	lbs	3,950*	3,950*	4,000*	4,000*	5,050*	5,050*	7,500*	7,500*	14,400*	11,550*	13,050*	8,600*	10,550*	6,800*
(-3.0m)	kg	1,780*	1,780*	1,790*	1,790*	2,250*	2,250*	3,310*	3,310*	5,430*	5,350*	6,030*	4,000*	4,860*	3,150*
-15' 0"	lbs	4,900*	4,900*	5,200*	5,200*	6,300*	6,300*	8,550*	8,550*	12,950*	11,300*	13,400*	8,350*	10,400*	6,550*
(-4.5m)	kg	2,200*	2,200*	2,330*	2,330*	2,800*	2,800*	3,790*	3,790*	5,680*	5,230*	6,230*	3,860*	4,830*	3,030*
-20' 0"	lbs	5,950*	5,950*	6,450*	6,450*	7,650*	7,650*	9,950*	9,950*	14,250*	11,250*	13,300*	8,250*	10,300*	6,400*
(-6.0m)	kg	2,670*	2,670*	2,880*	2,880*	3,410*	3,410*	4,400*	4,400*	6,260*	5,210*	6,180*	3,810*	4,770*	2,970*
-25' 0"	lbs	7,100*	7,100*	7,800*	7,800*	9,150*	9,150*	11,650*	11,650*	16,250*	11,400*	13,350*	8,300*	10,300*	6,400*
(-7.5m)	kg	3,180*	3,180*	3,480*	3,480*	4,070*	4,070*	5,140*	5,140*	7,110*	5,280*	6,200*	3,830*	4,770*	2,980*
-30' 0"	lbs			9,250*	9,250*	10,850*	10,850*	13,700*	13,700*	16,200*	11,700*	12,950*	8,450*	10,450*	6,550*
(-9.0m)	kg			4,120*	4,120*	4,830*	4,830*	6,050*	6,050*	7,500*	5,410*	6,010*	3,920*	4,830*	3,030*
-35' 0"	lbs			10,850*	10,850*	12,850*	12,850*	16,350*	16,350*	14,800*	12,150*	11,950*	8,800*	9,850*	6,850*
(-10.5m)	kg			4,830*	4,830*	5,690*	5,690*	7,170*	7,170*	6,890*	5,620*	5,570*	4,060*	4,610*	3,150*
-40' 0"	lbs					16,000*	16,000*	12,600*	12,600*	12,600*	10,200*	9,350*	8,300*	7,300*	
(-12.0m)	kg					6,720*	6,720*	7,560*	7,560*	5,950*	5,920*	4,830*	4,300*	3,950*	3,350*

		35' 0" (10.5 m)		40' 0" (12.0 m)		45' 0" (13.5 m)		50' 0" (15.0 m)		55' 0" (16.5 m)		Cap At Max. Reach	
End	Side	End	Side	End	Side	End	Side	End	Side	End	Side	End	Side
40' 0"	lbs											3,900*	3,900*
(12.0m)	kg											1,750*	1,750*
35' 0"	lbs					4,300*	4,300*					3,800*	3,800*
(10.5m)	kg					1,950*	1,950*					1,710*	1,710*
30' 0"	lbs					4,350*	4,350*	4,250*	4,250*			3,750*	3,750*
(9.0m)	kg					1,980*	1,980*	2,010*	2,010*			1,690*	1,690*
25' 0"	lbs					4,500*	4,500*	4,500*	4,300*			3,750*	3,750*
(7.5m)	kg					2,050*	2,050*	2,040*	2,010*			1,700*	1,680*
20' 0"	lbs			4,900*	4,900*	4,750*	4,750*	4,650*	4,150*			3,800*	3,400*
(6.0m)	kg			2,240*	2,240*	2,170*	2,170*	2,120*	1,950*	1,850*	1,560*	1,730*	1,530*
15' 0"	lbs	5,700*	5,700*	5,350*	5,350*	5,050*	4,950*	4,850*	4,000*	4,250*	3,200*	3,900*	3,150*
(4.5m)	kg	2,620*	2,620*	2,440*	2,440*	2,310*	2,310*	2,220*	1,880*	2,160*	1,520*	1,770*	1,430*
10' 0"	lbs	6,400*	6,400*	5,800*	5,800*	5,400*	4,700*	5,100*	3,850*	4,850*	3,100*	4,050*	3,000*
(3.0m)	kg	2,940*	2,940*	2,670*	2,670*	2,480*	2,200*	2,340*	1,790*	2,240*	1,460*	1,840*	1,350*
5' 0"	lbs	7,100*	6,750*	6,300*	5,450*	5,750*	4,450*	5,400*	3,650*	4,750*	3,000*	4,250*	2,850*
(1.5m)	kg	3,260*	3,120*	2,910*	2,530*	2,650*	2,070*	2,470*	1,700*	2,220*	1,400*	1,930*	1,300*
Ground	lbs	7,750*	6,250*	6,800*	5,100*	6,150*	4,200*	5,450*	3,450*	4,650*	2,900*	4,500*	2,800*
Line	kg	3,570*	2,900*	3,140*	2,370*	2,820*	1,950*	2,540*	1,620*	2,160*	1,350*	2,050*	1,270*
-5' 0"	lbs	8,350*	5,800*	7,250*	4,800*	6,250*	3,950*	5,300*	3,300*	4,550*	2,800*	4,550*	2,800*
(-1.5m)	kg	3,850*	2,700*	3,350*	2,220*	2,900*	1,850*	2,460*	1,550*	2,110*	1,300*	2,060*	1,270*
-10' 0"	lbs	8,650*	5,500*	7,150*	4,550*	6,050*	3,800*	5,150*	3,200*			4,650*	2,850*
(-3.0m)	kg	4,010*	2,560*	3,330*	2,110*	2,810*	1,770*	2,410*	1,490*			2,100*	1,290*
-15' 0"	lbs	8,400*	5,300*	7,000*	4,400*	5,950*	3,700*	5,100*	3,150*			4,850*	2,950*
(-4.5m)	kg	3,910*	2,460*	3,250*	2,040*	2,750*	1,720*	2,370*	1,460*			2,190*	1,340*
-20' 0"	lbs	8,300*	5,200*	6,900*	4,300*	5,900*	3,650*					5,200*	3,200*
(-6.0m)	kg	3,860*	2,410*	3,210*	2,000*	2,730*	1,690*	2,370*	1,460*			2,340*	1,440*
-25' 0"	lbs	8,300*	5,200*	6,950*	4,350*	5,950*	3,700*					5,700*	3,550*
(-7.5m)	kg	3,850*	2,410*	3,210*	2,000*	2,750*	1,710*					2,560*	1,590*
-30' 0"	lbs	8,450*	5,300*	7,050*	4,450*							6,500*	4,100*
(-9.0m)	kg	3,900*	2,450*	3,270*	2,050*							2,910*	1,830*
-35' 0"	lbs	8,200*	5,550*									7,300*	5,050*
(-10.5m)	kg	3,840*	2,560*									3,280*	2,220*
-40' 0"	lbs											7,700*	6,850*
(-12.0m)	kg											3,470*	2,960*

- The lift capacities above are based on the ISO standard, ISO 10567:2007 - "Earthmoving Machinery - Hydraulic Excavators - Lift Capacity"
- Lifting capacities shown should not be exceeded. The weight of all lifting accessories must be deducted from the above lifting capacities. The use of a work tool attachment point as the lift point could affect the machine lift performance.
- Lifting capacities are based on the machine standing on a firm, uniform supporting surface. Users must make allowances for job conditions such as soft or uneven ground.
- Lifting capacities shown do not exceed 75% of the minimum tipping loads or 87% of the hydraulic capacities. Lifting capacities marked with an asterisk (*) are limited by hydraulic capacities.
- The least stable position is lifting over the side.
- Operators should be fully acquainted with the Operator's Manual & Operating Safety Booklet, furnished by LBX Company LLC before operating the machine.
- Lift capacities apply only to the machine as originally manufactured and normally equipped by LBX Company LLC.
- This lift chart is without bucket, bucket cylinder, and bucket linkage. If the machine is equipped with any of these components the weight of those components must be deducted from the listed lifting capacities.

LONG FRONT SPECIFICATIONS

STANDARD EQUIPMENT

CAB

- 270° WAVES 3-Camera System
- 12V Power Outlet
- AM/FM Sound System
- Anti-Theft Device
- Auxiliary Switches on Control Lever
- Bluetooth
- Cab Air Filter - External
- Cab Handrails
- Cab Interior Light
- Cab ISO-Mounts
- LED Cab Lights
- Clear Roof Window
- Climate Control A/C and Heater
- Cup Holder (2)
- Defroster
- Digital Clock
- Emergency Exit and Hammer
- Face Vent
- Floor Mat (Split)
- Front Window One-Touch Lock
- Gate Lock Hydraulic Activation
- Horn
- Hour Meter (Digital)
- LCD 10" Color Monitor
- Maintenance Interval Reminders
- MP3 Auxiliary Input
- On-Board Diagnostic
- Radio Mute Switch
- Rear View Camera
- Rear View Mirrors (2)
- RemoteCARE Support System (GPS)
- Roof Sun Shade
- ROPS/FOPS Level 1 Certified Structure
- Safety Glass Windows
- SCM Air-Suspension Seat with Tilt & Heater
- Seat Recline
- Selectable Monitor Languages
- Small Storage

- Smart Phone Tray
- Travel Alarm with Cancel Switch
- Trip Meter (Digital)
- Wiper & Washer
- Wiper Switch on RH Joystick

ENGINE

- 85A Alternator
- Air Filter (Double Element)
- Air Filter Restriction Indicator
- Air Pre-Cleaner
- Auto Warm-Up System
- Auto-Idle
- Auto-Idle Shutdown
- Battery Disconnect Switch w/ LED Light
- Cooling Fan
- DEF Gauge on Monitor
- Diesel Particulate Filter (DPF)
- Diesel Oxidation Catalyst (DOC)
- Drain for Fuel Tank
- Dual Remote Fuel Filters with Water Separators
- EGR Coolers
- Emergency Engine Stop
- Engine Oil Sample Port
- Engine Protection Feature
- External Fuel Gauge
- External DEF Gauge
- Fan Belt Auto Tensioner
- Fan Housing
- Fuel Cooler
- Fuel Filter Restriction Indicator
- Fuel Management System
- Fuel Usage History
- Fuel Usage Monitor
- Glow Plug Pre-Heat
- Idle-Start
- Intercooler

- Neutral Start
- One-Touch Idle
- Radiator / Oil Cooler / Intercooler Protective Screens
- Remote Engine Oil Drain
- Remote Oil Filter
- Selective Catalytic Reduction (SCR)
- Turbocharger

HYDRAULICS

- Anti-drift valves (Arm & Boom)
- Arm Regeneration
- Arm Speed Assistance (2 Pump Flow)
- Attachment Cushion Valve
- Auto Swing Priority
- Custom Flow Control
- Auxiliary Tool Settings (Custom Naming)
- Auxiliary Valve
- Boom Regeneration
- Boom Speed Assistance (2 Pump Flow)
- Bucket Curl Assist
- Control Levers Pre-Wired for Auxiliary Hyd.
- Pattern Control Valve (2 way)
- Electronically Controlled Hydraulic Pumps
- Fire Wall
- Free Swing
- Hydraulic Filter Restriction Indicator
- Hydraulic Oil Sample Port
- Long Life Hydraulic Oil (5,000 Hour)
- Neutral Pump De-Stroke
- Oil Cooler
- Power Boost
- Power Save
- Pressure Reading on Monitor

- Pump Stand-By Pressure

UNDERCARRIAGE

- 800 mm shoes (31.5 in) 3-Bar Steel
- Extended Steps
- Lashing Points (Tie-Downs)
- Sealed Link Chain
- Single Track Guide
- Strutted Track Chain
- Swivel Guard

UPPERSTRUCTURE

- Counterweight
220 X4S Long Front
10,360 lbs (4,700 kg)
- **260 X4S Long Front**
16,200 lbs (7,350 kg)
- Center Cover (Over Main CV)
- Fuel Tank Belly Pan
- ISO Guard Rails
- LED Tool Box Light
- Lockable Fuel Cap and Service Doors
- Lockable Hydraulic Oil Tank Cap
- Lockable Engine Hood
- Lockable Tool Box

ATTACHMENT

- **220 X4S Long Front**
21' 0" (6.4 m) arm
28' 7" (8.7 m) boom
- **260 X4S Long Front**
26' 3" (8.0 m) arm
33' 9" (10.3 m) boom
- Chrome Pins
- Bucket Linkage
- LED Boom Light
- Teardrop Pin Retention Keepers

LONG FRONT SPECIFICATIONS

OPTIONAL EQUIPMENT

CAB

- 270° WAVES+ 3-Camera System
- Cab Sun Visor (Front)
- CAB Head Guard (FOPS Level 2)
- Front Guard (Mesh)
- Front Guard (BAR - OPG Level 1)
- Front Guard (BAR - OPG Level 2)
- LED Lights for WAVES Cameras (4)
- Rain Deflector
- Vandal Cover (Front Window)

ENGINE

- Reversible Cooling Fan
- Tropical Package

HYDRAULICS

- Hose Burst Check Valve

AUXILIARY HYDRAULIC OPTIONS

- Secondary Aux. w/ Proportional Joysticks

UNDERCARRIAGE

- 700 mm shoes (27.5 in) 3-Bar Steel
- Triple Track Guards

BUCKET SIZES



Scan the QR code to find the right size bucket, thumb, and coupler combination for the 220 and 260 X4S Long Front.

Or visit qrco.de/beWgjm





Link-Belt[®]

EXCAVATORS

LBX Company
lbxco.com

For more information
- including a digital
version of this brochure
- scan the QR code.



#LBX2505 · 5/24

LBX[®] and Link-Belt[®] are registered trademarks. Copyright 2024. All rights reserved. We are constantly improving our products and therefore reserve the right to change designs and specifications.